

# FOCUS

EXCLUSIVE OFFERS & EXCITING NEW PRODUCTS

## Eppendorf ThermoMixer C

Excellent mixing performance and temperature control for dependable, reproducible test results

## GREAT NEW OFFERS INSIDE:

Jellagen® Liquid Jellyfish Collagen  
(See page 22)

InnovaPrep® Concentrating Pipette Select™ Automated Bio-Concentrator  
(See page 15)

## Gilson Pipetman® L Manual Pipettes

A lightweight pipette with a handle that fits naturally in the hand. Featuring a patented volume locking system for safe, secure pipetting



See page 4...

**FREE**  
SmartBlock  
worth £506!



See page 8...

**40% OFF**

# WELCOME

## FOCUS Spring 2022 Edition



## KEY Highlights

### Welcome to another fantastic issue of FOCUS!

Packed with exclusive offers on laboratory products from market leading brands. We again have some exciting NEW products included in this edition; such as the revolutionary, sustainably sourced Jellagen® Liquid Jellyfish Collagen and the innovative InnovaPrep® Concentrating Pipette Select™ Automated Bio-Concentrator.

Speak to your local account manager to find out how these products can change your lab life for the better!

### REMEMBER:

These offers are EXCLUSIVE to SLS and valid until 31<sup>st</sup> May 2022



Eppendorf CellXpert® C170 and C170i CO<sub>2</sub> Incubators  
See page 5



Corning® Lambda™ Plus Pipette Starter Kit  
See page 9



OHAUS PR Precision Balances  
See page 17



Spex® Jenway® 6850 UV Visible Spectrophotometer  
See page 25



Grant Aqua Pro Shaking Water Baths  
See page 41



Getinge Lancer ULTIMA 820LX Undercounter Labware Washer Dryer  
See page 47



### FOCUS Extra

For more great savings visit our website for additional 'FOCUS Extra' online offers.

For this edition, FOCUS Extra includes fantastic offers on many other products such as the Biochrom WPA Biowave 3 and 3+ Spectrophotometers, the Thermo Scientific™ Solaris™ Open Air Orbital Shakers and the Syngene NuGenius Gel Documentation System.

Plus many more!

### KEY to product symbols:



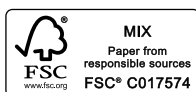
Length of warranty



Sustainability



Made in Britain



WORLD LAND TRUST™  
www.carbonbalancedpaper.com  
CBP001952

## Eppendorf MiniSpin® and MiniSpin® Plus Microcentrifuges

2 YEARS

22% OFF

eppendorf

- Extremely compact footprint
- Acceleration and deceleration time <13s
- User-friendly digital display for time and speed
- Separate short-spin key for fast and comfortable centrifugation
- Soft-touch lid closure for ergonomic lid locking
- Large LCD display
- MiniSpin® plus provides automatic RPM/RCF conversion, and extended timer to 99 min or continuous centrifugation
- Includes F-45-12-11 rotor which has a capacity of 12 x 1.5/2.0mL tubes



Code	Description	Max Speed, RPM	Max Speed, x g	Timer	List Price, £	Offer Price, £
<b>F151377</b>	MiniSpin®	800 - 13400	12100	15s - 30min	880.00	686.00
<b>F151378</b>	MiniSpin® Plus	800 - 14500	14100	15s - 99min	1143.00	892.00

## Eppendorf 5425 R Refrigerated Centrifuges

2 YEARS

eppendorf

Excellent cooling system for the separation of temperature-sensitive samples from 0.2 - 5mL, ensures optimal separation results and reliable cooling at 4°C even at maximum rotor speed. Short pre-cooling time of only 8 minutes [-21°C to 4°C], the centrifuge is ready to use in no time.

22% OFF

- Aerosol-tight Eppendorf QuickLock® rotor lids for an ergonomic lid locking
- Extended rotor program (e.g. 5.0mL rotor, swing-bucket rotor for divisible plates to speed up your PCR/qPCR setup)
- OptiBowl® design for quiet operation, even without rotor lid
- Max. rotor capacity: 24 x 2.0mL / 10 x 5.0mL vessels
- Max. speed: 21,300 x g (15,060 RPM)
- FastTemp function: from -21°C to 4°C in only 8 minutes
- Temperature range: -10°C to +40°C
- Continuous cooling maintains a constant temperature after the run has been completed



Code	Description	Supplied with	Capacity	List Price, £	Offer Price, £
<b>F17002</b>	5425 R refrigerated centrifuge with keypad	FA-24x2 rotor	24 x 1.5/2mL tubes	4541.00	3542.00
<b>F17004</b>	5425 R refrigerated centrifuge with rotary knobs	FA-24x2 rotor	24 x 1.5/2mL tubes	4541.00	3542.00

## Eppendorf 5702 Centrifuges

2 YEARS

eppendorf

The 5702 family of low speed, general purpose centrifuges was especially designed to meet the requirement of low- to mid-throughput research and cell culture labs.

- SOFT brake function for slow acceleration and braking
- "At set RPM" function starts the timer when selected rotational speed is reached
- Electronic imbalance detection for maximum safety
- Timer: 0 to 99 min, with continuous run function
- FastTemp® function for fast pre-cooling
- Continuous cooling maintains constant temperature after the run
- ECO shut-off engages after 8 hours of non-use
- Centrifugation speed up to 3,000 × g (4,400 RPM)



22% OFF

Code	Model	Supplied with	List Price, £	Offer Price, £
<b>F14552</b>	5702	Rotor A-4-38 and 15/50mL adapters	2579.00	2012.00
<b>F14558</b>	5702 R refrigerated	Rotor A-4-38 and 15/50mL adapters	4515.00	3522.00

## Eppendorf ThermoMixer C

2 YEARS

eppendorf

Combines excellent mixing performance and temperature control to guarantee complete, dependable and reproducible test results.

- Mixing, heating, and cooling for high flexibility
- All common vessels and plate formats from 5µL to 50mL by using different SmartBlocks
- 2D Mix-Control technology results in excellent sample mixing
- Anti-spill technology prevents lid wetting and cross-contamination
- Mixing frequency from 300 to 3000 RPM
- Predefined program keys and clearly arranged menu guides for simple and intuitive operation
- Temperature range: 15°C below RT to 100°C (depending on SmartBlock used)
- 15s to 99.3h or continuous time



FREE SmartBlock worth £506!

Code	List Price, £	Offer Price, £
<b>F17006</b>	2945.00	2439.00

### SmartBlocks

Choose **one** of the below SmartBlocks

Code	Description
<b>F17008</b>	24 x 1.5mL
<b>F17010</b>	24 x 2mL
<b>F17012</b>	8 x 5mL

Includes one FREE SmartBlock

# Eppendorf CellXpert® C170 and C170i CO<sub>2</sub> Incubators

2  
YEARS

eppendorf

Ensuring the reproducibility of experiments by minimising atmospheric fluctuations inside the incubator, with fast temperature and CO<sub>2</sub> recovery in less than 5 minutes without overshoot and advanced microprocessor control. Featuring a fan-less design for increased capacity, lower operating costs, and less opportunity for contamination.

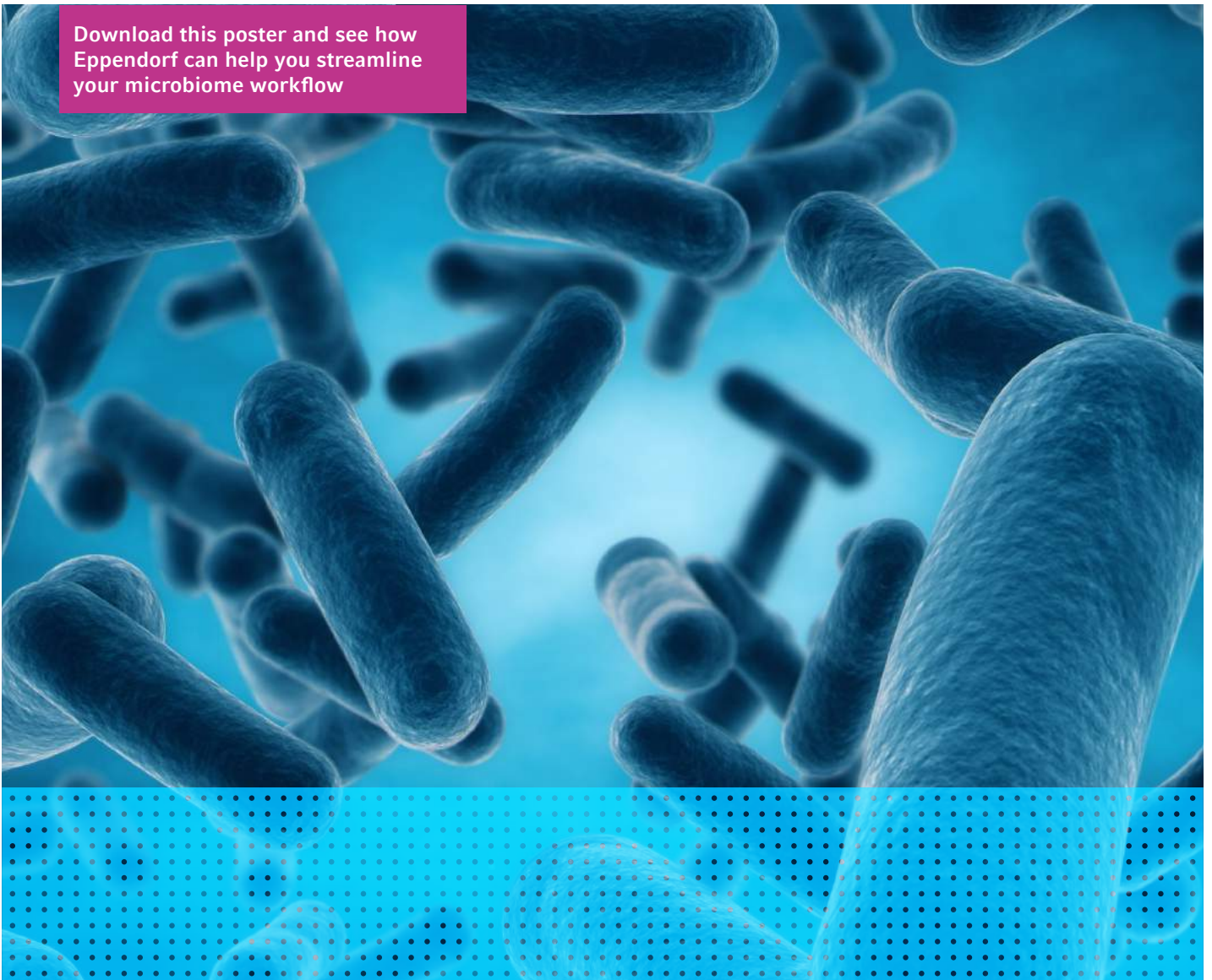
- No internal HEPA-filters that potentially contaminate the chamber after HTD
- Seamless interior to minimise possible points of contamination
- Easy access USB ports
- Intuitive user interface
- Dual-channel infrared CO<sub>2</sub> sensor
- Capacity 170L
- Temperature range +4 to +50°C
- CO<sub>2</sub> range 0.1 to 20%
- External dims, w x d x h, mm, 718 x 715 x 900
- Internal dims, w x d x h, mm, 539 x 445 x 692

Up to  
**20%**  
OFF



Code	Model	Inner Doors	Material	O <sub>2</sub> Control	Door Handle	Display	High Temperature Disinfection, °C	On Board Data Logging	List Price, £	Offer Price, £
<b>F14574</b>	C170	Non-segmented	Stainless steel	No	Right	Standard LED	140	No	7162.00	5873.00
<b>F17014</b>	C170	4 segments	Stainless steel	No	Right	Standard LED	140	No	8702.00	7136.00
<b>F14562</b>	C170i	Non-segmented	Stainless steel	No	Right	Touch screen	180	Yes	8364.00	6691.00
<b>F14564</b>	C170i	Non-segmented	Stainless steel	No	Left	Touch screen	180	Yes	8364.00	6691.00
<b>F14570</b>	C170i	Non-segmented	Stainless steel	1 - 20%	Right	Touch screen	180	Yes	10170.00	8136.00
<b>F14572</b>	C170i	Non-segmented	Stainless steel	1 - 20%	Left	Touch screen	180	Yes	10170.00	8136.00
<b>F17016</b>	C170i	Non-segmented	Copper	1 - 20%	Right	Touch screen	180	Yes	13360.00	10688.00
<b>F17018</b>	C170i	Non-segmented	Copper	1 - 20%	Left	Touch screen	180	Yes	13360.00	10688.00
<b>F14577</b>	C170i	4 segments	Stainless steel	No	Right	Touch screen	180	Yes	9883.00	7906.00
<b>F14579</b>	C170i	4 segments	Stainless steel	No	Left	Touch screen	180	Yes	9883.00	7906.00
<b>F14603</b>	C170i	4 segments	Stainless steel	1 - 20%	Right	Touch screen	180	Yes	11690.00	9352.00
<b>F14605</b>	C170i	4 segments	Stainless steel	1 - 20%	Left	Touch screen	180	Yes	11690.00	9352.00
<b>F17020</b>	C170i	4 segments	Stainless steel	1 - 20%	Right	Touch screen	180	Yes	12520.00	10016.00
<b>F14607</b>	C170i	8 segments	Stainless steel	1 - 20%	Right	Touch screen	180	Yes	12070.00	9656.00
<b>F14611</b>	C170i	8 segments	Stainless steel	1 - 20%	Left	Touch screen	180	Yes	12070.00	9656.00
<b>F17022</b>	C170i	8 segments	Stainless steel	1 - 20%	Right	Touch screen	180	Yes	12900.00	10320.00

Download this poster and see how Eppendorf can help you streamline your microbiome workflow



# Manage the Challenge

Translate your microbiome workflow into routine applications.

When studying diverse microbiomes, scientists can easily become overwhelmed by the resources, organization, and technical expertise needed for accurate analysis.

Luckily there are many modern technologies available to address the pain points surrounding microbiome research.

See how Eppendorf can help you make the most of your microbiome research challenging tasks.

- > A full set of solutions from pipettes to centrifuges to freezers and PCR
- > Efficiency and full safety of your samples from sample preparation to cold storage
- > Reproducible and reliable process
- > Peace of mind with our comprehensive service options

## Download poster

### Sample Management



Microbiome analysis requires hundreds or thousands of samples. Tissues, microbes, DNA, RNA, proteins, and metabolites can all be collected at multiple time points. Researchers can lose their samples in freezer storage and have difficulty finding them. These samples are usually part of a larger workflow where they need to be additionally tracked for reference.

[www.scientificlabs.co.uk/Eppendorf\\_Focus\\_Poster\\_2022](http://www.scientificlabs.co.uk/Eppendorf_Focus_Poster_2022)

# Thermo Scientific™ Finnpiquette™ F1 Variable Volume Pipettes

5  
YEARS

**Thermo**  
SCIENTIFIC

A lightweight design that maximises user comfort and reduces strain. Available as 14 single channel models covering 0.2µL to 10mL and 8, 12 and 16 multichannel versions covering 1-300µL.

- One-handed volume changes for convenience
- Optional handle strips for your F1 pipette also enable a firmer grip
- 120° adjustable finger rest – for both right- and left-handed operator comfort
- Super blow-out ensures efficient delivery of micro-volumes and prevents capillary action in 50µL models and below
- Secure volume lock

**45%  
OFF**



Code	Channel	Volume Range, µL	List Price, £	Offer Price, £
<b>F6184</b>	Single	0.2 - 2	371.00	<b>204.00</b>
<b>F6186</b>	Single	0.5 - 5	371.00	<b>204.00</b>
<b>F12238</b>	Single	1 - 10	371.00	<b>204.00</b>
<b>F12240</b>	Single	2 - 20	371.00	<b>204.00</b>
<b>F12242</b>	Single	5 - 50	371.00	<b>204.00</b>
<b>F12244</b>	Single	10 - 100	371.00	<b>204.00</b>
<b>F12246</b>	Single	20 - 200	371.00	<b>204.00</b>
<b>F12248</b>	Single	30 - 300	371.00	<b>204.00</b>
<b>F12250</b>	Single	100 - 1000	371.00	<b>204.00</b>
<b>F12252</b>	Single	500 - 5000	386.00	<b>212.00</b>
<b>F12254</b>	Single	1000 - 10000	386.00	<b>212.00</b>
<b>F12256</b>	8	1 - 10	1002.00	<b>551.00</b>
<b>F12258</b>	8	5 - 50	1002.00	<b>551.00</b>
<b>F12260</b>	8	10 - 100	1002.00	<b>551.00</b>
<b>F12262</b>	8	30 - 300	1002.00	<b>551.00</b>
<b>F12264</b>	12	1 - 10	1105.00	<b>608.00</b>
<b>F12266</b>	12	5 - 50	1105.00	<b>608.00</b>
<b>F12268</b>	12	10 - 100	1105.00	<b>608.00</b>
<b>F12270</b>	12	30 - 300	1105.00	<b>608.00</b>

## Gilson Pipetman® L Manual Pipettes

3 YEARS

GILSON

A lightweight pipette with a handle that fits naturally in the hand. Pipetman® L features a patented volume locking system for safe, secure pipetting. These features, in combination with Gilson's latest lubricated piston assembly mean that Pipetman® L offers very light pipetting forces.

- Adjustable tip ejector button to adapt to both right and left handed users
- Clip mechanism allows easy and safe removal of tip ejector
- GLP features include 2-D barcode for traceability

VR multichannel models are equipped with v-rings at the bottom of the tip holder for a proper fit with most tip brands.



Code	Description	Channel	Volume Range, µL	Ejector	List Price, £	Offer Price, £
<b>F13196</b>	P2L	Single	0.2 - 2	Metal	249.00	149.00
<b>F13198</b>	P10L	Single	1 - 10	Metal	249.00	149.00
<b>F13200</b>	P20L	Single	2 - 20	Metal	249.00	149.00
<b>F13202</b>	P100L	Single	10 - 100	Metal	249.00	149.00
<b>F13204</b>	P200L	Single	20 - 200	Metal	249.00	149.00
<b>F13206</b>	P1000L	Single	100 - 1000	Metal	249.00	149.00
<b>F13208</b>	P2L	Single	0.2 - 2	Plastic	249.00	149.00
<b>F13210</b>	P10L	Single	1 - 10	Plastic	249.00	149.00
<b>F13212</b>	P20L	Single	2 - 20	Plastic	249.00	149.00
<b>F13214</b>	P100L	Single	10 - 100	Plastic	249.00	149.00
<b>F13216</b>	P200L	Single	20 - 200	Plastic	249.00	149.00
<b>F13218</b>	P1000L	Single	100 - 1000	Plastic	249.00	149.00
<b>F13220</b>	P5000L	Single	500 - 5000	—	249.00	149.00
<b>F13222</b>	P10mL	Single	1000 - 10000	—	249.00	149.00
<b>F10154</b>	P8X10L	8	0.5 - 10	—	713.00	428.00
<b>F10158</b>	P8X20L	8	2 - 20	—	713.00	428.00
<b>F10162</b>	P8X200L	8	20 - 200	—	713.00	428.00
<b>F10166</b>	P8X300L	8	20 - 300	—	713.00	428.00
<b>F17028</b>	P8X1200L	8	100 - 1200	—	748.00	449.00
<b>F10156</b>	P12X10L	12	0.5 - 10	—	831.00	499.00
<b>F10160</b>	P12X20L	12	2 - 20	—	831.00	499.00
<b>F10164</b>	P12X200L	12	20 - 200	—	831.00	499.00
<b>F10168</b>	P12X300L	12	20 - 300	—	831.00	499.00
<b>F17030</b>	P12X1200L	12	100 - 1200	—	873.00	524.00
<b>F17032</b>	P8X200LVR	8	20 - 200	—	748.00	449.00
<b>F17036</b>	P8X300LVR	8	20 - 300	—	748.00	449.00
<b>F17034</b>	P12X200LVR	12	20 - 200	—	873.00	524.00
<b>F17038</b>	P12X300LVR	12	20 - 300	—	873.00	524.00



## Gilson Pipetman® L 4 Pipette Kit

3 YEARS

GILSON

Includes:

- 4 PIPETMAN® L pipettes: P2L, P20L, P200L, P1000L
- 3 racks DIAMOND tips: D10L, D200, D1000
- 4 SINGLE™ pipette holders
- Gilson Guide to Pipetting handbook

40% OFF



Code	List Price, £	Offer Price, £
F13190	897.00	538.00

## Corning® Lambda™ Plus Pipette Starter Kit

CORNING

Engineered to provide the highest levels of accuracy, reproducibility, and comfort. Features smooth plunger movement and extremely low pipetting forces. A locking mechanism prevents accidental change to the volume setting. Designed to maintain their calibration, even after repeated use and autoclaving. A key is included with each pipette for easy in-house calibration.

- Factory calibrated to strict ISO 8655 standards
- Fully autoclavable and UV resistant
- Designed for universal fit with all common brands of pipette tips
- Adjustable tip ejector

49% OFF



**Includes:**

4 x single-channel pipettes (0.5 to 10µL, 2 to 20µL, 20 to 200µL, 100 to 1000µL), universal carousel rack for 6 single channel pipettes, 3 x Corning DeckWorks™ pipette tips (10µL, 200µL, 1000µL)

Code	List Price, £	Offer Price, £
F13018	733.00	375.00

## Corning® Lambda™ EliteTouch™ Starter Pack



Engineered to provide the highest level of ergonomics, accuracy, and precision. Features smooth plunger movement and extremely low pipetting forces to reduce wrist strain and fatigue (RSI). Coloured pushbuttons (included) can help define user or application for sample safety and lower risk of cross contamination.

- Ergonomic handle design for perfect fit for both right and left hand
- Convenient one-hand volume setting with auto-lock system
- 4-digit counter for greater precision, perfectly positioned for visibility at all times
- Fully autoclavable and UV resistant
- Easy in-lab calibration helps you quickly adjust your pipettor to various liquid types
- Individually tested and supplied with a certificate of quality

### Includes:

4 x single channel pipettes (0.5 to 10µL, 2 to 20µL, 20 to 200µL, 100 to 1000µL), universal linear stand for 4 single channel pipettes, 3 x Corning® DeckWorks pipette tips (10µL, 200µL, 1000µL), 3 x coloured pushbuttons (4 sets).



**50% OFF**

Code	List Price, £	Offer Price, £
F16130	928.00	460.00



## Corning® Stripettor™ Ultra Pipette Controller

2 YEARS

**50% OFF**

Supplied with with universal power supply, three 0.2µm filters, 3 coloured nose pieces and wall hanger.

Code	List Price, £	Offer Price, £
F151058	301.00	146.00

# Axygen® Automation Tips

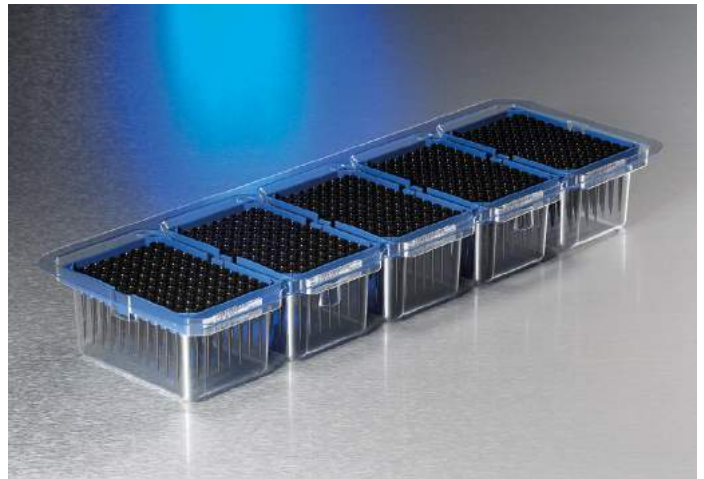
Your alternative source for precision pipet tips

Axygen automation tips are an alternative source for precision pipet tips compatible with Hamilton automated liquid handling workstations.

## Features

- ▶ Unique product choices which are not available from other manufacturers
- ▶ Tips are packaged in both hanging tip rack and nested stacked tip racks
- ▶ Engineered to function optimally with no hardware or software adjustments

Contact your SLS Territory Sales Manager for more information.



## SLS Lab Pro Pipettes

3  
YEARS



The SLS Lab Pro pipettes offer superior quality at an affordable price. These are lightweight pipettes with a handle that fits naturally in the hand. They feature a volume locking system for safe, secure pipetting. A lubricated piston assembly offers very light pipetting forces.

- Adjustable tip ejector button to adapt to both right and left-handed users
- Clip mechanism allows easy and safe removal of tip ejector
- Fully autoclavable



50%  
OFF

Code	Channel	Volume Range, $\mu$ L	List Price, £	Offer Price, £
F151284	Single	0.2 - 2	210.00	105.00
F151285	Single	1 - 10	210.00	105.00
F151286	Single	2 - 20	210.00	105.00
F151287	Single	10 - 100	210.00	105.00
F151288	Single	20 - 200	210.00	105.00
F151289	Single	100 - 1000	210.00	105.00
F151290	Single	500 - 5000	240.00	120.00
F151291	Single	1000 - 10000	240.00	120.00
F151292	8	0.5 - 10	495.00	248.00
F151293	8	2 - 20	495.00	248.00
F151294	8	20 - 200	495.00	248.00
F151295	8	20 - 300	495.00	248.00
F151296	12	0.5 - 10	565.00	283.00
F151297	12	2 - 20	565.00	283.00
F151298	12	20 - 200	565.00	283.00
F151299	12	20 - 300	565.00	283.00

SDS PAGE Buffer



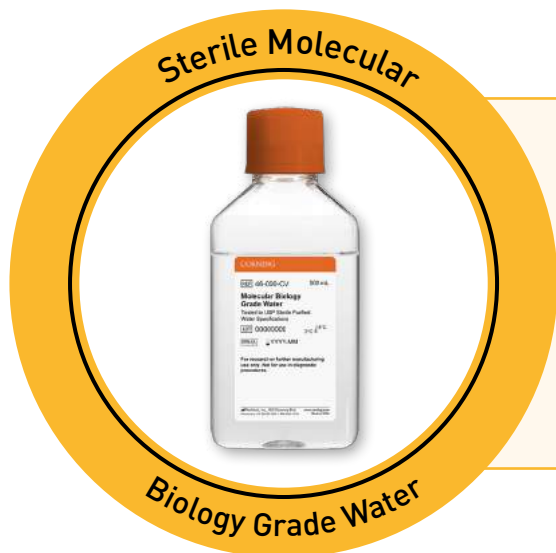
10X Concentration

### Tris-Glycine-SDS PAGE Buffer 10X Concentration

For SDS PAGE protein electrophoresis. Contains 0.25M Tris base, 1.92M glycine, and 1% (w/v) SDS.

30%  
OFF

Code	Pack	List Price, £	Offer Price, £
F17098	1L	43.20	30.30
F17096	4L	85.00	59.00



**60% OFF**

## Corning® Sterile Molecular Biology Grade Water

Code	Pack	List Price, £	Offer Price, £
<b>F151056</b>	6 x 500mL	108.70	<b>43.20</b>

## SLS Lab Basics Pipettes

**3 YEARS**



### Single Channel:

- Ergonomic design ensuring light weight & soft plunger movement
- Click-stop system for volume selection
- Colour coded for easy identification
- Calibration conforms to EN-ISO 8655 with report enclosed with every pipette

### Multi Channel:

- Smooth and light tip loading and ejection
- Leak free sealing of tips
- Manifold is easily removable, fully autoclavable and can rotate 360° for easy right or left hand operation



Up to **70% OFF**

Code	Channel	Volume Range, µL	List Price, £	Offer Price, £	Code	Channel	Volume Range, µL	List Price, £	Offer Price, £
<b>F151300</b>	Single	0.1 - 2.5	121.00	<b>48.00</b>	<b>F151313</b>	8	0.5 - 10	546.00	<b>165.00</b>
<b>F151301</b>	Single	0.5 - 10	121.00	<b>48.00</b>	<b>F151309</b>	8	5 - 50	546.00	<b>165.00</b>
<b>F151305</b>	Single	2 - 20	121.00	<b>48.00</b>	<b>F151310</b>	8	10 - 100	546.00	<b>165.00</b>
<b>F151302</b>	Single	5 - 50	121.00	<b>48.00</b>	<b>F151311</b>	8	20 - 200	546.00	<b>165.00</b>
<b>F151303</b>	Single	10 - 100	121.00	<b>48.00</b>	<b>F151312</b>	8	30 - 300	546.00	<b>165.00</b>
<b>F151306</b>	Single	20 - 200	121.00	<b>48.00</b>	<b>F151318</b>	12	0.5 - 10	599.00	<b>200.00</b>
<b>F151304</b>	Single	100 - 1000	121.00	<b>48.00</b>	<b>F151314</b>	12	5 - 50	599.00	<b>200.00</b>
<b>F151307</b>	Single	500 - 5000	145.00	<b>52.00</b>	<b>F151315</b>	12	10 - 100	599.00	<b>200.00</b>
<b>F151308</b>	Single	1000 - 10000	145.00	<b>52.00</b>	<b>F151316</b>	12	20 - 200	599.00	<b>200.00</b>
					<b>F151317</b>	12	30 - 300	599.00	<b>200.00</b>

## SLS Select Deep Well Storage Plates



SLS Select deep well storage plates are high performance plates produced in cleanrooms that are certified for medical device assembly. They are manufactured in pure virgin medical grade polypropylene (PP) with class leading low levels of extractable elements.

- ANSI-SBS footprint
- Tested for low extractables
- Alpha-numeric reference grid
- Suitable for automated or manual applications
- For use in sample storage at 86°C to DNA denaturation at 100°C
- Autoclavable
- No inner edges to allow better collection of magnetic beads
- Manufactured under DNase/RNase free environment
- Coloured versions available



Code	Shape	No. of Wells	Well Volume, mL	Bottom	Colour	Pack	List Price, £	Offer Price, £
<b>F16418</b>	Round	96	1	U	Natural	50	200.00	80.00
<b>F16420</b>	Round	96	1	U	Black	50	185.00	74.00
<b>F16422</b>	Round	96	1	U	Natural	50	200.00	80.00
<b>F16424</b>	Round	96	1.2	U	Natural	50	207.00	83.00
<b>F16426</b>	Round	96	1.2	U	Natural	50	207.00	83.00
<b>F16428</b>	Round	96	2	U	Natural	50	216.00	86.00
<b>F16430</b>	Square	96	2	V	Natural	50	170.00	68.00
<b>F16432</b>	Square	96	2	V	Black	50	187.00	75.00
<b>F16434</b>	Square	96	2.2	V	Natural	50	170.00	68.00
<b>F16436</b>	Square	96	2.2	U	Natural	50	277.00	111.00
<b>F16438</b>	Square	384	0.3	V	Natural	48	708.00	283.00

## Sealing Mats

Code	Description	Pack	List Price, £	Offer Price, £
<b>F17190</b>	96 square well silicone sealing mat	50	397.00	159.00
<b>F17192</b>	96 square well silicone sealing mat, can be punctured	50	397.00	159.00
<b>F17194</b>	96 round well silicone sealing mat for 1.0mL plates, can be punctured	50	397.00	159.00
<b>F17196</b>	96 round well silicone sealing mat for 2.0mL plates, can be punctured	50	397.00	159.00
<b>F17198</b>	96 square well silicone sealing mat, cross cut	50	397.00	159.00
<b>F17200</b>	96 round well silicone sealing mat for 2.0mL plates, cross cut	50	397.00	159.00
<b>F17202</b>	384 square well silicone sealing mat	50	397.00	159.00

## InnovaPrep® Concentrating Pipette Select™ Automated Bio-Concentrator

1  
YEAR

INNOVAPREP

An automated, rapid bio-concentrator for concentrating bacteria, parasites, moulds, fungal spores and fragments, whole cells, and viruses from liquids faster, easier and better. The one-pass method works by robust filtration through its high-flow single-use pipette tips followed by instant sample recovery using InnovaPrep's patented Wet Foam Elution™ process. Provides concentration factors beyond competing technologies, exponentially increasing detection of trace contamination in just minutes.

- Works with a variety of sample types, sample volumes, and analysis methods
- Single-use Concentrating Pipette Filter Tips (CPTs) come in six pore sizes including an ultrafilter
- Allows users to customise up to 15 protocols
- Fast operation - the ability to concentrate up to 200mL/minute

NEW

Request a demo!



See website for all accessories and associated consumables

Code	Alt Ref	Dims, w x d x h, mm	List Price, £
INP1000	CP Select	157 x 292 x 353	14455.00

## SLS Lab Pro Safevac Aspiration System

1  
YEAR

SLS LAB PRO

Designed for laboratory waste recovery and separation of liquid and solid. Can be widely used in cell culture, DNA extraction, microplate waste removal, and any other liquid separation or recovery.

- Sensitive level sensor to prevent liquid overflow during operation
- Waste bottle, tubing and handle are fully autoclavable
- Lid, tubing and handle are easy for disassembling, cleaning and autoclaving
- Wide range of adapters to fit tubes and microplates

55%  
OFF



Code	Vacuum Range, mbar	Vacuum Speed, mL/S	Volume, L	Dims, w x d x h, mm	List Price, £	Offer Price, £
F151283	0 - 600	1 - 15	4	180 x 240 x 450	1320.00	600.00

## SLS Select Media Bottles

60%  
OFF



- Perfect for everyday laboratory use
- Suitable for many applications, such as storage of culture media
- Made from high quality borosilicate glass 3.3 to ISO 3585
- Heat and chemical resistance
- GL45 blue polypropylene cap and pouring ring included
- White graduations and marking spot
- Sloped shoulders for easy pour
- Standards to ISO 4796-1
- Autoclavable



Code	Volume, L	Pack	List Price, £	Offer Price, £
F151342	0.1	10	28.80	11.50
F151343	0.25	10	32.80	13.10
F151344	0.5	10	39.50	15.80
F151345	1	10	55.00	22.00
F151346	2	10	119.00	47.60
F151347	5	Each	113.00	45.20
F151348	10	Each	183.00	73.00
F151349	20	Each	286.00	114.00

## SLS Select Biocleanse Disinfectant Wipes



Low-residue, alcohol-free SLS Select Biocleanse disinfectant wipes offer a convenient, effective, powerful all-in-one cleaning and disinfecting solution for a broad range of surfaces, including PMMA and aluminium.

- Wide spectrum microbicide
- pH neutral
- Alcohol-free
- Effective against all enveloped viruses e.g. HIV, HBV, HCV, coronaviruses
- Wipe size: 200 x 190mm
- 200 wipes per tub or refill pouch

Over  
40%  
OFF



Code	Description	Pack	List Price, £	Offer Price, £
F151360	Disinfectant wipe tub	6	77.00	36.60
F151361	Disinfectant wipes refill pouch	10	103.00	59.00



## OHAUS PR Precision Balances

2  
YEARS



Designed for routine weighing applications in your workplace offering basic functionality for routine weighing applications. Designed for uncomplicated operation with easy-to-use display and interface with smart design and durable construction.

- 4 built in applications
- Backlight LCD display
- Constructed with ABS housing, removable stainless steel pan, glass draftshield with sliding top door (on 0.001g models only), integrated weigh-below-hook, security bracket, and calibration lock
- Design features: user-selectable environmental filters and brightness settings, auto-tare, auto-dim, user-selectable span calibration points, software lockout and reset menu, user-selectable communication settings and data print options, software overload/underload indicator, stability indicator

35%  
OFF



Code	Model	Capacity, g	Readability, g	Certified Readability, g	Calibration	List Price, £	Offer Price, £
<b>F151108</b>	PR223/E	220	0.001	—	External	610.00	397.00
<b>F151109</b>	PR223	220	0.001	—	Internal	745.00	484.00
<b>F17068</b>	PR223M	220	0.001	0.01	Internal	875.00	569.00
<b>F151110</b>	PR423/E	420	0.001	—	External	625.00	406.00
<b>F151111</b>	PR423	420	0.001	—	Internal	760.00	494.00
<b>F17070</b>	PR423M	420	0.001	0.01	Internal	890.00	579.00
<b>F151112</b>	PR523/E	520	0.001	—	External	660.00	429.00
<b>F151113</b>	PR523	520	0.001	—	Internal	800.00	520.00
<b>F17072</b>	PR523M	520	0.001	0.01	Internal	925.00	601.00
<b>F151114</b>	PR1602/E	1600	0.01	—	External	625.00	406.00
<b>F151115</b>	PR1602	1600	0.01	—	Internal	760.00	494.00
<b>F17074</b>	PR1602M	1600	0.01	0.1	Internal	890.00	579.00
<b>F151116</b>	PR2202/E	2200	0.01	—	External	645.00	419.00
<b>F151117</b>	PR2202	2200	0.01	—	Internal	790.00	514.00
<b>F17076</b>	PR2202M	2200	0.01	0.1	Internal	925.00	601.00
<b>F151118</b>	PR4202/E	4200	0.01	—	External	675.00	439.00
<b>F151119</b>	PR4202	4200	0.01	—	Internal	815.00	530.00
<b>F17078</b>	PR4202M	4200	0.01	0.1	Internal	940.00	611.00
<b>F151120</b>	PR4201/E	4200	0.1	—	External	575.00	374.00
<b>F151121</b>	PR4201	4200	0.1	—	Internal	710.00	462.00
<b>F17080</b>	PR4201M	4200	0.1	1	Internal	840.00	546.00
<b>F151122</b>	PR6201/E	6200	0.1	—	External	595.00	387.00
<b>F151123</b>	PR6201	6200	0.1	—	Internal	730.00	475.00
<b>F17082</b>	PR6201M	6200	0.1	1	Internal	860.00	559.00

## OHAUS PR Analytical Balances

2  
YEARS



Designed for routine weighing applications in your workplace offering basic functionality for routine weighing applications. Designed for uncomplicated operation with easy-to-use display and interface with smart design and durable construction.

- 4 built in applications
- Backlight LCD display
- Constructed with ABS housing, removable stainless steel pan, glass draftshield with sliding top door, integrated weigh-below-hook, security bracket, and calibration lock

- User-selectable environmental filters, auto-tare, user-selectable span calibration points, software lockout and reset menu, user-selectable communication settings and data print options, overload/underload indicator, stability indicator

35%  
OFF



Code	Model	Capacity, g	Readability, mg	Certified Readability, mg	Calibration	List Price, £	Offer Price, £
<b>F151104</b>	PR124/E	120	0.1	—	External	850.00	553.00
<b>F151105</b>	PR124	120	0.1	—	Internal	990.00	644.00
<b>F17064</b>	PR124M	120	0.1	1	Internal	1130.00	735.00
<b>F151106</b>	PR224/E	220	0.1	—	External	925.00	601.00
<b>F151107</b>	PR224	220	0.1	—	Internal	1065.00	692.00
<b>F17066</b>	PR224M	220	0.1	1	Internal	1210.00	787.00

## SLS Lab Pro A-Series Analytical Balances

5  
YEARS



These top-loading analytical balances have a compact footprint. The breeze break has rotary sliding doors that slide behind the balance and can be removed with one touch. These features, combined with the small footprint, make the balances ideal for applications where space is at a premium.

- Compact footprint
- Reverse backlit LCD display for easy to read weighing results
- Statistical calculation function eliminates the need for a stats printer
- Standard RS-232C
- Fast, compact SHS sensor, response time ~2 seconds

45%  
OFF



Code	Capacity, g	Readability, mg	Calibration	List Price, £	Offer Price, £
<b>F151338</b>	102	0.1	External	908.00	499.00
<b>F151336</b>	102	0.1	Internal	1103.00	607.00
<b>F151339</b>	152	0.1	External	991.00	545.00
<b>F151340</b>	152	0.1	Internal	1159.00	637.00
<b>F151341</b>	252	0.1	External	1164.00	640.00
<b>F151337</b>	252	0.1	Internal	1393.00	766.00

## SLS Lab Pro SM Series Micro Analytical Balances

5 YEARS



The SLS Lab Pro SM Series of balances have been developed for high end micro weighing with the automatic elimination of static electricity at a competitive price. A built in fanless ioniser eliminates static and a large weighing chamber with interlockable slide doors allows operation with either hand.

- One touch automatic calibration
- Internal data memory function for up to 200 sets of data
- GLP/GMP/GCP/ISO compliant output
- Built-in temperature, humidity, and atmospheric pressure sensors
- RS-232C and Quick USB interfaces as standard
- AD-1688 weighing data logger as standard

Up to  
**50% OFF**



Code	Capacity, g	Readability, mg	Pan Dims, mm	List Price, £	Offer Price, £
<b>F14386</b>	22	0.001	25	11385.00	5693.00
<b>F14388</b>	5.1/22	0.001/0.01	25	10103.00	5052.00
<b>F14390</b>	250	0.01	90	5481.00	3015.00
<b>F14392</b>	220	0.1	90	3593.00	2156.00
<b>F14394</b>	320	0.1	90	3899.00	2339.00
<b>F14396</b>	520	0.1	90	4178.00	2507.00

Corning®



RPMI 500mL

### Corning® RPMI 500mL

Supplied in packs of 6

Code	Description	List Price, £	Offer Price, £
<b>F16150</b>	1640 with L-glutamine	53.00	24.40
<b>F16152</b>	1640 with L-glutamine and 25mM HEPES	81.00	25.20
<b>F16156</b>	1640 without L-glutamine	63.00	22.40
<b>F17024</b>	1640 with 25mM HEPES, without L-glutamine	163.00	29.20

OVER  
**50% OFF**

## SLS Lab Basics Inverso TC100 Inverted Microscope

1  
YEAR



Ideal for the typical working laboratory and is built to a high-quality specification. Robust enough to withstand the rigours of constant daily use and with a quintuple position nose-piece fitted as standard, it is ideally suited for multiple observation techniques and/or magnifications.

- Trinocular head inclined at 45°
- Eyepieces: 10/20mm wide field
- Objectives: 4X, 40X plan-achromatic LWD/10X, 20X, 40X Phase Contrast
- Condenser: NA 0.3 (removable), working distance 72mm
- Stage: 160 x 250mm with additional mechanical stage (2 interchangeable stage plates) stage extending board
- Focusing: coaxial coarse and fine
- Illumination: 3W LED
- Epifluorescence module (F17204 only) adds blue excitation (460-490nm) and green excitation (480-550nm)

Over  
**40%**  
OFF



Code	Description	List Price, £	Offer Price, £
<b>F151126</b>	Inverso TC100 inverted microscope	3598.00	2000.00
<b>F17204</b>	Inverso TC100 inverted microscope with epifluorescence	11100.00	5375.00

## SLS Lab Basics Tablet Microscope Camera



Tablet camera especially designed for microscopy applications. Comes with a high-definition 9.7 colour LCD touchscreen and is equipped with software that allows the user to preview an image, set the white balance, capture images and videos as well as having measurement and annotation capabilities.

- Integral C-mount fitting
- RK3066 dual-core 1.5Hz CPU touch screen operation, can be used as a small computer
- Keyboard and mouse can also be used to operate
- Includes Wi-Fi and Bluetooth wireless networking for easy file exchange
- Storage: external SD memory card - up to 32GB

35%  
OFF



Code	CPU	Memory	Camera	List Price, £	Offer Price, £
<b>F151127</b>	RK3066 dual-core 1.5Hz	ROM 2GB; RAM 1GB DDR3	15fps at 1024 x 768; 1/2.5 (4:3) 5Mpx CMOS	1004.00	650.00



## Bringing you the established brands across the protein research workflow

**Sera-Mag™** nucleic acid sample and library preparation

**HyClone™** cell culture media and sera

**Whatman™** laboratory filtration products

**ÄKTA™** chromatography columns, resins, and systems

**Amersham™** systems, membranes, films, and reagents

Cytiva is a global provider of technologies and services that advance and accelerate the development and manufacture of therapeutics. We have a rich heritage tracing back hundreds of years, and a fresh beginning since 2020.

[www.scientificlabs.co.uk](http://www.scientificlabs.co.uk) - Search Cytiva

Cytiva and the Drop logo are trademarks of Life Sciences IP Holdings Corporation or an affiliate.

ÄKTA, Amersham, HyClone, Sera-Mag, and Whatman are trademarks of Global Life Sciences Solutions USA LLC or an affiliate.

© 2021 Cytiva

For local office contact information, visit [cytiva.com/contact](http://cytiva.com/contact)

CY21794-15Jul21-AD



Read  
more  
[here](#)

## Jellagen® Liquid Jellyfish Collagen Type 0

Jellagen® self-coating collagen for cell culture and medical applications. As Collagen Type 0 is not derived from mammals or fish, it has the advantage of being disease vector and BSE free. It is intended to produce (dried) thin layer coatings on tissue culture plates/flasks to facilitate attachment of anchorage dependent cells.

- Non-mammalian Collagen Type 0, avoiding the ethical and safety concerns
- Like-for-like substitute for existing collagens, offering a matrix that promotes cell adhesion, proliferation and cell functionality
- Evolutionary ancient collagen demonstrating sequence homology to collagen I, II, III and V
- Concentration 4mg/mL



Code	Pack	List Price, £
JEL1000	10mL	100.00
JEL1002	100mL	900.00
JEL1004	500mL	4000.00
JEL1006	1L	7500.00

## Jellagen® JellaGel™ Next Generation Hydrogel

JellaGel™ is a Jellyfish Collagen Hydrogel for *in vitro* cell culture and tissue engineering, offering a natural, non-mammalian alternative. This product is conveniently supplied in kit format with JellaGel™ solution, buffer and crosslinker for ease of use.

- Biochemically simple: no unwanted/undefined growth factors or biological contaminants that could negatively influence the culture of cells
- Non-mammalian Collagen Type 0, avoiding the ethical and safety concerns
- Evolutionary ancient collagen demonstrating sequence homology to collagen I, II, III and V
- An easy to use hydrogel that doesn't require the use of ice or cold rooms, can be formulated into a self sustaining hydrogel at room temperature



Code	Pack	List Price, £
JEL1034	10mL	260.00
JEL1036	100mL	2210.00

## Accuris QuadCount™ Automated Cell Counter

1  
YEAR

The Accuris QuadCount™ improves on the simple technique of brightfield microscopy by utilising an LED light source, precision optics and a high resolution CMOS detector. A finely tuned, motorized XYZ positioning stage provides for extra fine focusing and ability to capture multiple images. The advanced software eliminates human bias in dead/live determinations, reduces counting errors, saves time, and improves efficiency.

The QuadCount utilises a unique 4-chambered disposable QuadSlide™, four samples can be processed in one slide.

3 count modes available to analyse different sample volumes:

- Quick mode: 0.15µL / 20 seconds (1 image frame)
- Normal mode: 0.9µL / 30 seconds (6 image frames)
- Precise mode: 3.6µL / 100 seconds (24 image frames)



20%  
OFF

Code	List Price, £	Offer Price, £
<b>F16192</b>	3695.00	2956.00

## Benchmark Pulse 150™ Ultrasonic Homogeniser

2  
YEARS

Benchmark  
Scientific

The Pulse 150 ultrasonic homogeniser uses cavitation and ultrasonic waves to break cells in suspension, shear DNA and prepare samples for ChIP assays. The unit processes samples from 0.1mL to 150mL (with the appropriate horn).

Included: controller, transducer, temperature probe, 6mm diameter titanium alloy horn, wrenches and a soundproof box with sample platform. The 6mm horn is appropriate for volumes from 10mL to 100mL. Optional horns are available for other volumes.

- 4.3 inch colour touch screen
- Pulsed operation and power level is easily programmed
- Twenty programs can be stored in memory
- Alarms alert the user to over temperature, over/no load and expiration of time

20%  
OFF



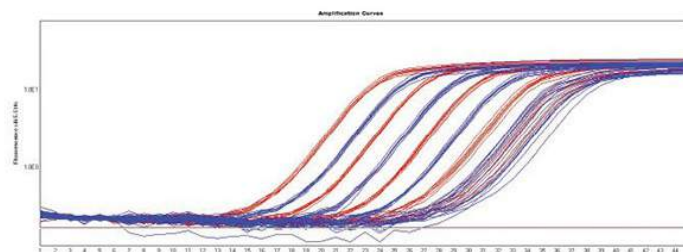
Code	List Price, £	Offer Price, £
<b>F151248</b>	2520.00	2016.00

## Meridian Bioscience SensiFAST™ qPCR Kits

meridian BIOSCIENCE  
A Division of Meridian

20%  
OFF

- Reproducible – consistent results between technical replicates for increased confidence in results
- Specific – antibody-mediated hot-start DNA polymerase minimises non-specific amplification for improved assay sensitivity and reliability
- Sensitive – reliable quantification of low abundance targets and scarce samples
- Robust – reliable, accurate detection of DNA and RNA targets from a broad range of sample types
- Fast – delivers reproducible, accurate assay results in as little as 30 minutes



Code	Description	Pack	List Price, £	Offer Price, £
<b>F14645</b>	SYBR® Hi-ROX	500 x 20µL reactions	276.00	221.00
<b>F14647</b>	SYBR® Lo-ROX	500 x 20µL reactions	276.00	221.00
<b>F14649</b>	SYBR® No-ROX	500 x 20µL reactions	253.00	202.00
<b>F17090</b>	SYBR® No-ROX One-Step Kit	100 x 20µL reactions	142.00	114.00
<b>F17092</b>	SYBR® Hi-ROX One-Step Kit	100 x 20µL reactions	156.00	125.00
<b>F17094</b>	SYBR® Lo-ROX One-Step Kit	100 x 20µL reactions	155.00	124.00

## Clearline UV Cabinet/PCR Workstation

ClearLine

The DNA-Workstation is an UV sterilisation cabinet to decontaminate reagents and equipment prior to carrying out PCR reactions. The powerful 25 watt UV light (254nm) of the DNA-Workstation denatures nucleic acids in 5 - 30 minutes making them unsuitable for amplification and therefore eliminating any possible cross contamination. The DNA-Workstations are equipped with a white lamp for illumination. The unit is equipped with 4 - 8mm glass walls, which also acts as an efficient shield of beta-radioactive emissions. The DNA-Workstations stand on an easy to clean stainless steel tray.

- Glass walls, which are resistant to UV-cracking
- 1 x UV/AirCleaner (254nm)
- 1 x built-in socket & inlet for powercords

Over  
30%  
OFF



Code	Dims, w x d x h, mm	Weight, kg	List Price, £	Offer Price, £
<b>F17222</b>	700 x 580 x 555	28.8	2500.00	1695.00



# Spex® Jenway® 6850 Spectrophotometer

1 YEAR

spex®  
jenway

Double beam spectrophotometer with a variable spectral bandwidth. The highly stable optics and two detectors measure the sample and reference simultaneously optimising measurement accuracy. Measurement modes for photometrics, concentration, multi-wavelength, spectrum scanning, kinetics, quantitation, DNA/RNA and protein analysis. Includes Jenway Prism PC software, offering additional functionality with preloaded methods for DNA/RNA and protein analysis, extensive post-measurement tools, unlimited results saving and easy export of data.

- Variable spectral bandwidth 0.5, 1, 2, 4, 5nm
- Integrated user interface
- USB port for data storage
- Conforms to European Pharmacopeia requirements
- Supplied fitted with single 10 x 10mm cuvette holder in sample and reference position, instruction manual, power cables, PC software on CD ROM with USB connection cable and dongle, 4GB USB memory stick, 2 x quartz cuvettes, 4 x glass cuvettes, dust cover and 230V power supply

25% OFF



Code	Wavelength Range, nm	Wavelength Accuracy, nm	Bandwidth, nm	Dims, w x d x h, mm	List Price, £	Offer Price, £
F17084	190 to 1100	±0.3 (at 0.5 and 1nm), ±0.5 (at 2, 4 and 5nm)	Variable 0.5, 1, 2, 4, 5	600 x 450 x 200	7611.00	5708.00

Tris-Glycine Electroblotting



Buffer 10X Concentration

## Tris-Glycine Electroblotting Buffer 10X Concentration

For western electro blotting procedures, or with nitrocellulose and nylon membranes. Contains 0.25M Tris base and 1.92M glycine, with a pH of 8.4.

Code	Pack	List Price, £	Offer Price, £
F17102	1L	40.10	28.10
F17100	4L	80.00	56.00

30% OFF

# Spex® Jenway® 72 Series Spectrophotometers



The 72 Series spectrophotometers use diode array technology to produce exceptionally fast results. With a large colour touchscreen user interface, this range is simple to set up and navigate. Results can be saved to USB memory stick or printed using the optional printer. This spectrophotometer has measurement modes for photometrics, concentration, optical density, quantitation, spectrum scanning and kinetics.

- Not affected by ambient stray light and so can be used with the lid open
- Supplied with a 10 x 10mm cuvette holder fitted as standard
- Small footprint and very lightweight (2.8kg)
- Optional heated cell accessories available - temperature control of 37°C ±5°C, resolution of 0.5°C
- 2 year warranty (1 year on lamp)

**25% OFF**



Code	Description	Light Source	Wavelength Range, nm	Spectral Bandwidth, nm	List Price, £	Offer Price, £
<b>F14346</b>	7200 visible scanning spectrophotometer	Tungsten halogen	335 - 800	7	1816.00	1362.00
<b>F14348</b>	7205 UV/ visible scanning spectrophotometer	Xenon	198 - 800	5	2518.00	1889.00

**OVER 50% OFF**



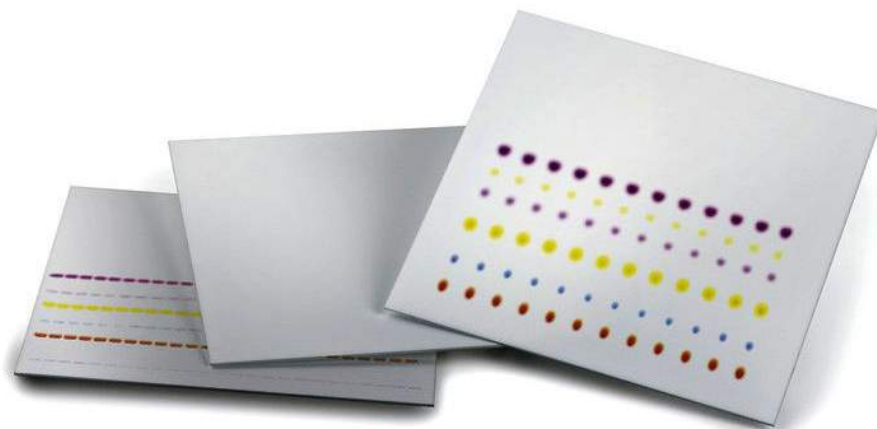
## Corning® DMEM 500mL

Supplied in packs of 6

Code	Description	List Price, £	Offer Price, £
<b>F16132</b>	4.5g/L glucose with L-glutamine and sodium pyruvate	52.00	21.00
<b>F16134</b>	1g/L glucose with L-glutamine and sodium pyruvate	52.00	24.20
<b>F16136</b>	4.5g/L glucose with L-glutamine without sodium pyruvate	57.00	24.30
<b>F16138</b>	4.5g/L glucose with sodium pyruvate without L-glutamine	64.00	22.40
<b>F16140</b>	4.5g/L glucose without L-glutamine and sodium pyruvate	132.00	25.20

## Supelco® Thin Layer Chromatography

As the leading supplier of thin-layer chromatography consumables, Merck Supelco® offer an extensive portfolio of plates, reagents and accessories for TLC, preparative TLC, and high performance TLC (HPTLC). In addition, they also offer special MS-grade TLC and HPTLC plates for the perfect combination with mass spectrometry. Each of these high quality products is setting new standards in quality, performance and utility.



Code	Description	Pack	List Price, £	Offer Price, £
F17104	TLC silica gel 60 F254, aluminium sheets, 5 x 7.5cm	20	43.00	36.70
F17110	TLC silica gel 60 F254, aluminium sheets, 10 x 20cm	25	90.00	77.00
F17108	TLC silica gel 60 F254, aluminium sheets, 20 x 20cm	25	180.00	153.00
F17144	TLC silica gel 60 F254, aluminium roll, 500 x 20cm	Each	145.00	123.00
F17120	TLC silica gel 60/Kieselguhr F254, aluminium sheets, 20 x 20cm	25	152.00	129.00
F17112	TLC silica gel 60 F254, plastic sheets, 20 x 20cm	25	160.00	136.00
F17106	TLC silica gel 60 F254, glass plates, 5 x 10cm	200	345.00	293.00
F17116	TLC silica gel 60 F254, glass plates, 10 x 20cm	50	250.00	213.00
F17114	TLC silica gel 60 F254, glass plates, 20 x 20cm	25	203.00	173.00
F17122	TLC silica gel 60 RP-2 F254 (silanized), glass plates, 20 x 20cm	25	534.00	454.00
F17124	TLC silica gel 60G, glass plates, 20 x 20cm	25	138.00	117.00
F17126	TLC silica gel 60G F254, glass plates, 20 x 20cm	25	137.00	116.00
F17118	PLC silica gel 60 F254, 2mm, glass plates, 20 x 20cm	12	384.00	326.00
F17136	HPTLC silica gel 60 F254, aluminium sheets, 20 x 20cm	25	279.00	237.00
F17130	HPTLC silica gel 60, glass plates, 10 x 10cm	25	189.00	161.00
F17138	HPTLC silica gel 60 F254, glass plates, 10 x 10cm	25	208.00	177.00
F17132	HPTLC silica gel 60 F254, glass plates, 10 x 10cm	100	579.00	492.00
F17140	HPTLC silica gel 60 F254, glass plates, 20 x 10cm	50	451.00	383.00
F17142	HPTLC silica gel 60 F254, GLP, glass plates, 10 x 10cm	25	229.00	195.00
F17134	HPTLC silica gel 60 F254, multifformat pre-scored to 5 x 5cm, glass plates, 10 x 10cm	100	258.00	219.00

With over 450,000 chemical products available on our website we have a solution for any requirement.

[www.scientificlabs.co.uk/chemicals](http://www.scientificlabs.co.uk/chemicals)



## Corning® LSE™ Mini Microcentrifuge

**33% OFF**

Includes an 8-place rotor for 1.5/2.0mL tubes and adapters for 0.5/0.4mL and 0.2mL tubes. 4-place rotor for PCR strip tubes also included. Fixed speed: 6000RPM / 2000 × g.

Code	Dims, w x d x h, mm	List Price, £	Offer Price, £
F151061	148 x 174 x 122	216.00	145.00

## OHAUS Frontier™ FC5513 Microcentrifuge

2 YEARS



The FC5513 is a high-speed benchtop microlitre centrifuge, with four optional rotors designed for a range of essential lab applications. Engineered with convenient operation in mind, the FC5513 features a uniquely designed splash-proof front panel with modern touch-wheel control on an intuitive interface.

- Compact design saves valuable benchtop space
- Can support spin columns and haematocrit capillary tubes when used with additional rotor options



**35% OFF**

Code	Max Speed, x g	Supplied with	Capacity	List Price, £	Offer Price, £
F16120	17,317	Angle rotor	24 x 1.5/2.0mL	1510.00	982.00



## HygienePak

2 x 3-ply face masks (type IIR), 2 x 1.5mL 70% alcohol gel sachets, 3 x anti-bacterial wipe sachets.

Code	List Price, £
COV1128	0.99

## SLS Flowgen Plate Spinner

2 YEARS

SLS FLOWGEN

Rapidly spin down droplets in PCR or microplates to improve PCR yields or give more consistent assay results. The swing out rotor has two plate carriers that rest at a 75° angle. This allows plates to be inserted confidently without sealing tapes or caps. Most samples can be spun down in less than 20 seconds.

- Unique swing-out rotor design prevents spillage
- Accepts most types of PCR plates
- Capacity: 2 x PCR plates (when stacking skirted PCR plates, max. capacity is 4 plates); 2 x microplates



Over  
**40%**  
OFF

Code	Max Speed, RPM	Max Speed, x g	Dims, w x d x h, mm	List Price, £	Offer Price, £
<b>F14352</b>	2550	600	230 x 260 x 197	775.00	<b>440.00</b>

## Accuris SmartWasher™ 96 Microplate Washer

2 YEARS

Benchmark Scientific

Full plates, partial plates, and strips with U, V, C, or flat bottoms are accepted by this fully automated washer. All parameters, including dispense volume, suction time, soak and shake cycles, and shaking speed are easily programmed using the large 4.3" LCD display and keypad. The washer comes equipped with 2 wash bottles, 1 rinse bottle and a waste bottle.

- Precision control of aspiration needle position - accurate to 0.1mm
- Minimal residual liquid,  $\leq 1\mu\text{L}/\text{well}$
- Auto rinse function eliminates cross contamination
- Up to 100 wash protocols can be customised and stored
- Liquid level sensors in wash and waste bottles
- Wash protocols can be transferred via flash drive
- 8 or 12 channel manifold - sold separately - **see SLS website**

**30%**  
OFF



Code	List Price, £	Offer Price, £
<b>F151254</b>	4596.00	<b>3221.00</b>

## Tecan Infinite F50 Absorbance Plate Reader

2  
YEARS

TECAN

Ideal for photometric measurements of ELISAs and kinetic assays in the 400 to 750nm wavelength range. The systems' innovative design combines eight measurement channels with long-life LED lamps for fast parallel reading and minimal maintenance costs.

- Ideal for absorbance-based ELISAs, kinetic and multi-label reading
- Ready for qualitative and quantitative data analysis
- Magellan's example files and tutorials enable you to get started easily
- 405nm, 450nm, 492nm and 620nm filters included
- Eight-channel optics for fast reading
- Reference channel for optimised light intensity
- Long-life LED lamps offer longer maintenance-free operation
- Linear plate shaking

15%  
OFF



Code	List Price, £	Offer Price, £
<b>F12298</b>	4754.00	4041.00

## Tecan Sunrise Absorbance Plate Readers

3  
YEARS

TECAN

With Magellan universal reader control and data analysis software add-on, is an ideal solution for a range of applications, such as ELISAs, enzyme kinetics, cell viability studies, veterinary assays and many more. It supports a broad wavelength range – from 340 to 750nm – and can measure an entire 96-well plate in less than six seconds.

- Ideal for colorimetric ELISAs, kinetic assays and agglutination readings
- Temperature control option for enzyme kinetics
- Tuneable wavelength option
- Advanced 12-channel optics for fast results
- Microplate shaking capability

20%  
OFF



Code	Description	List Price, £	Offer Price, £
<b>F12300</b>	Sunrise with 4 filter slide, 405nm, 450nm, 492nm & 620nm filters and Magellan software	5979.00	4783.00
<b>F12302</b>	Sunrise with 6 filter slide, 405nm, 450nm, 492nm, 540nm, 570nm & 620nm filters and Magellan software	6825.00	5460.00
<b>F12304</b>	Sunrise with gradient filter slide, (400nm - 700nm range) and Magellan software	8070.00	6456.00
<b>F12306</b>	Sunrise with 4 filter slide, 405nm, 450nm, 492nm & 620nm filters, temperature control (42°C) and Magellan software	7042.00	5634.00
<b>F12308</b>	Sunrise with 6 filter slide, 405nm, 450nm, 492nm, 540nm, 570nm & 620nm filters, temperature control (42°C) and Magellan software	7888.00	6310.00
<b>F12310</b>	Sunrise with gradient filter slide, (400nm - 700nm range), temperature control (42°C) and Magellan software	9133.00	7306.00

## Cole-Parmer® Stuart™ US150 Hotplate

3 YEARS

Cole-Parmer  
stuart

General purpose hotplate designed for safety as well as performance. The US150 has a robust aluminium/silicon alloy top plate for excellent heat transmission. The top plate has a thin ceramic coating for added chemical resistance. A 700W element gives rapid heating and ensures even temperature distribution across the whole surface of the plate.

- Can with the SCT1 digital temperature controller to accurately control sample temperature
- "Hot" warning light will flash whenever the plate temperature is above 50°C even when the hotplate is turned off and unplugged from the mains
- Integrated fitting for a retort rod, base is shaped to allow a retort base to slide underneath the unit
- Accurate temperature control with LED setting scale
- BioCote antimicrobial protection



25%  
OFF

Code	Heated Area, mm	Max Temp, °C	Dims, w x d x h, mm	List Price, £	Offer Price, £
<b>F17088</b>	150 x 150	325	172 x 248 x 120	283.00	212.00

## OHAUS Guardian 5000 Hotplate Stirrers

2 YEARS

OHAUS

Ensure consistent stirring performance and temperature control. With the LCD display, and chemical resistant SmartHousing™ that is easy to clean and remains cool to the touch. SafetyHeat™ protects the lab with its early detection system to continuously monitor the electronics and shut off heating before an over temperature condition occurs.

- LCD display
- Audible alarm
- Green indicator lights for heating/stirring
- Speed range: 60 - 1600 RPM
- Temperature range: +5 to 500°C



35%  
OFF

Code	Description	Capacity, L	Plate Dims, mm	Plate Material	List Price, £	Offer Price, £
<b>F17054</b>	Hotplate	15	178 x 178	Ceramic	327.00	213.00
<b>F17056</b>	Stirrer	15	178 x 178	Ceramic	327.00	213.00
<b>F17058</b>	Hotplate stirrer	15	178 x 178	Ceramic	432.00	281.00
<b>F17060</b>	Hotplate stirrer	18	254 x 254	Ceramic	620.00	403.00
<b>F17062</b>	Hotplate stirrer round plate	20	135 Ø	Aluminium	424.00	276.00

## Benchmark Industrial OS40L Overhead Stirrer

2 YEARS

Benchmark Scientific

Features high torque and advanced digital microprocessor control for mixing of low and medium viscosity samples. Speed and run time are accurately set and monitored on the LCD screen. A feed-through chuck holds shafts in place and is easily tightened and loosened without tools. Sensors shut down operation in the case of high viscosity or obstruction to protect from damage and a splash cover protects the connection mechanism.

- Compatible with vessels up to 24 inches high
- Includes complete stand assembly
- Supplied with a 4 arm stainless steel propeller



30% OFF

Code	Capacity, L	List Price, £	Offer Price, £
F16534	40	1349.00	944.00

## OHAUS Mini Vortex Mixers

OHAUS

Mini vortex mixers for gentle to high-speed reliable mixing. Can be used for re-suspending liquids, mixing reagents, buffers and emulsions, ELISA assay, drug extractions and mixing samples. Independent LED displays for speed/time allow the operator to view both settings simultaneously (digital model) and adjustment knob with dial markings for variable speed control (analogue model).

- Orbit 4.9mm
- Speed range 500 – 2800 RPM
- Capacity 0.5 kg
- Dims, l x h x w, cm, 21 x 16.5 x 12.3
- Weight 4.4kg



35% OFF

Code	Control	Timer	List Price, £	Offer Price, £
F17050	Analogue	—	204.00	133.00
F17052	Digital	1 sec - 9999 mins	310.00	202.00



## Benchmark BenchMixer™ XL Multi-Tube Vortexer

2 YEARS

Benchmark Scientific

30% OFF

The BenchMixer™ XL is a heavy-duty vortex mixer designed to facilitate hands-free mixing in tubes, flasks, vials or cylinders. It is ideal for the QuEChERS pesticide analysis method and is instantly adaptable to an exceptionally broad range of vessels, racks and applications (horizontal or vertical). The precisely balanced drive system includes an over sized motor that delivers accurate, reproducible speeds up to 2500 RPM with rattle-free operation and minimal vibration. The programmable pulsing function allows for time specific interval mixing, increasing agitation.

- Assortment of accessories for a variety of tubes, flasks & plates
- Pulsing program for interval mixing
- Includes 50 x 12mm tube rack



Code	Speed Range, RPM	Timer	Dims, w x d x h, mm	List Price, £	Offer Price, £
F151243	500 to 2500	1 min to 99 hr 59 min	385 x 235 x 420	3107.00	2138.00

## Benchmark Roto-Mini™ Plus Variable Speed Rotator

2 YEARS

Benchmark Scientific

35% OFF

Suitable for an array of laboratory applications including resuspension, protein binding, nucleic acid purification, etc. The motion can be adjusted from vertical (end over end) mixing, to horizontal (rolling or hybridisation style) mixing.

Includes tube holders for common tube sizes: 11 x 1.5/0.2mL (pack of 2), 5 x 10-15mL (pack of 2), 5 x 5-7mL (pack of 2), 6 x 50mL (pack of 1). Plus rocking platform (4.5 x 3in), a 96 x 0.2mL tube/strip/plate holder for mixing PCR vessels.

- "Mix" function: rotating in combination with oscillations
- "Pause" function: rotating with intermittent stops during rotation
- "Rock" function: back and forth, gentle rocking motion



Code	Speed Range, RPM	Dims, w x d x h, mm	List Price, £	Offer Price, £
F17180	5 to 70	410 x 137 x 199	482.00	309.00

## Benchmark RotoBot™ Mini Programmable Rotator

2 YEARS

Benchmark Scientific

The RotoBot™ rotating mixers feature advanced programming options that far surpass that of the traditional laboratory rotator. With digital speed control and more than 10 operating modes, the RotoBot™ can be selected to perform a wide variety of rotating, mixing and vibrating actions. In addition, these actions can be combined in succession using the C1 and C2 "Custom Modes", providing the user with a nearly infinite level of programming. Supplied with holders for 12 x 1.5mL tubes, 2 x 15mL & 2 x 50mL tubes.

35% OFF

- Timer 1 sec to 99 hrs 59 min or continuous
- Advanced programming with a wide variety of rotational modes
- Set for full 360° rotation, or interrupt rotations with pausing & mixing intervals
- Slow rotating to vigorous mixing
- Cold room and incubator safe
- Accepts common tubes from 1.5 to 50mL
- Optional rocking platform



Code	Speed Range, RPM	Dims, w x d x h, mm	List Price, £	Offer Price, £
F17182	1 to 80	290 x 137 x 199	610.00	391.00



### Cole-Parmer® Stuart™ SA8 Vortex Mixer

- Variable speed 200 - 2500 RPM
- With BioCote antimicrobial protection

25% OFF

Code	Dims, l x w x h, mm	Weight, kg	List Price, £	Offer Price, £
F17086	215 x 135 x 78	3.2	280.00	210.00

## Benchmark BlotBoy™ 3D Rocker

2  
YEARS

Benchmark  
Scientific

This platform rocker provides the perfect 3-dimensional motion for all blot related applications. The tilt angle and speed have been optimally set for gentle, but thorough mixing in gel trays, boxes and other flat vessels. Supplied with autoclavable flat mats and are ideal for blot washes and gel staining/destaining. Can accept stackable platforms and handle loads up to 2kg. Has a maintenance free brushless motor and is safe for use in cold rooms and incubators.

- 12 x 12 inch platform
- Optimised speed and tilt for gel blotting, washing & staining
- Tri-directional motion for thorough, gentle mixing
- Optional stacking platforms available



35%  
OFF

Code	Dims, w x d x h, mm	List Price, £	Offer Price, £
<b>F17224</b>	300 x 300 x 200	529.00	<b>339.00</b>

## Benchmark Orbi-Shaker™ JR

2  
YEARS

Benchmark  
Scientific

The Orbi-Shaker™ JR is designed for small capacity applications and laboratories where bench space is at a premium. The shaker includes a 9.5 x 8 inch non slip rubber coated platform that is ideal for tissue culture flasks, Petri dishes and staining trays. Mixes at a 19mm orbit, perfect for thorough mixing and aeration.

- Digital speed control, 50 to 300 RPM
- Horizontally circular 19mm orbit
- Extremely compact, perfect for low to medium capacity applications
- Timer 1 min to 99 hr or continuous
- Load capacity 4 x 1L

30%  
OFF



Code	Dims, w x d x h, mm	Weight, kg	List Price, £	Offer Price, £
<b>F17226</b>	330 x 300 x 120	5.5	1085.00	<b>758.00</b>

## SLS Flowgen Incu-Shaker™ Incubated Shaker

2  
YEARS

SLS FLOWGEN

A compact shaking incubator with a remarkably small footprint. Accepts several platforms and a variety of flasks, tubes and other common vessels. The standard platform (included) features a non-slip, rubber coated surface, ideal for tissue culture flasks, Petri dishes and staining trays. The convenient MAGic Clamp™ platform is also available for use with Erlenmeyer flasks and test tube racks.

Over  
**40%**  
OFF

- Touch screen control over time, speed and temperature
- Horizontally circular 19mm orbit for aeration & mixing
- Instantly exchange flask clamps with MAGic Clamp™ accessories
- Program STEP feature for linking consecutive programs



Code	Temp Range, °C	Temp Uniformity/Accuracy, ±%	Speed Range, RPM	Orbit, mm	Dims, w x d x h, mm	Weight, kg	List Price, £	Offer Price, £
F151359	Ambient +5 to 70	0.25/0.1	30 to 300	19	280 x 480 x 330	11.5	3500.00	1975.00

**35%**  
OFF

PYREX®



Conical Flasks

### PYREX® Heavy Duty Conical Flasks

Mechanically stronger than standard flasks with reinforced rims. Printed with white graduations.

Code	Capacity, mL	Pack	List Price, £	Offer Price, £
F17238	25	12	115.00	75.00
F17240	50	12	115.00	75.00
F17242	125	12	97.00	63.00
F17244	250	12	103.00	67.00
F17246	500	6	59.00	38.40
F17248	1000	6	95.00	62.00
F17250	2000	Each	33.30	21.60

## Corning® LSE™ Benchtop Incubated Shaker with Platform



Each unit includes a software package, which provides the option of saving data to an external computer or monitoring RPM and temperature throughout runs.

The lid has a low pivot point which provides a space-saving size sure to fit on the lab bench and under shelves. The maximum capacity is 16 x 125mL/ 9 x 250mL/ 5 x 500mL/ 4 x 1000mL.

- Outstanding temperature uniformity
- Large viewing area for undisturbed monitoring of samples
- Multiple shelving options
- Precision control shaking mechanism
- PT100 sensor
- 1min to 99hr timer



Code	Speed Range, RPM	Orbit, mm	Temp Range, °C	Dims, w x d x h, mm	List Price, £	Offer Price, £
<b>F151062</b>	20 to 300	19	+5 to 80	370 x 530 x 400	<b>3212.00</b>	<b>2084.00</b>

## Corning® LSE™ Incubated Shakers



This cabinet-style incubator has a compact footprint and can also be stacked to maximize space efficiency. The built in orbital shaker accepts a large assortment of platforms and clamps that can accommodate flasks, Petri dishes, and test tube racks.

- Outstanding temperature uniformity
- Large viewing area for undisturbed monitoring of samples
- Multiple shelving options
- Precision control shaking mechanism
- Speed range: 20 to 300 RPM
- Temperature range: ambient +5 to 80°C



Code	Capacity, L	List Price, £	Offer Price, £
<b>F151064</b>	49	<b>4445.00</b>	<b>3227.00</b>
<b>F151065</b>	71	<b>4943.00</b>	<b>3555.00</b>

## Benchmark Incu-Shaker™ Refrigerated Shaking Incubator

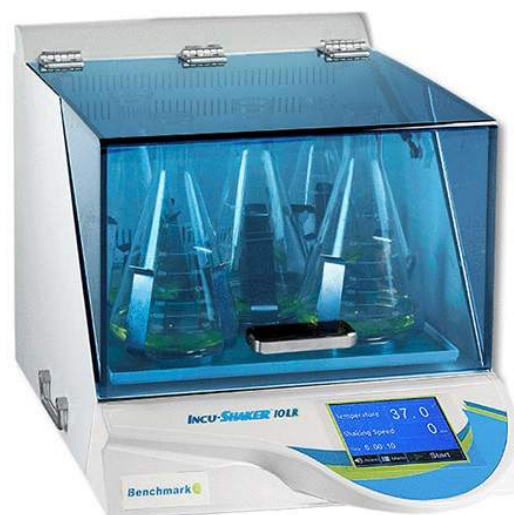
2  
YEARS

Benchmark  
Scientific

A heavy-duty performer, designed for heavy workloads and continuous use. Outstanding temperature accuracy and uniformity are supported by heat distribution technology that ensures that temperatures are precisely maintained throughout the chamber. Noise and vibration are minimised by an advanced, computer designed motor isolation system. A standard, rubber mat platform is included and is ideal for use with tissue culture flasks, Petri dishes, staining trays and other flat vessels.

- Large platform 18 x 18 inch, for up to 5 x 2L
- Horizontally circular 19mm orbit for aeration & mixing
- Timer: 1 min to 48 hrs or continuous

30%  
OFF



Code	Speed Range, RPM	Temp Range, °C	Dims, w x d x h, mm	List Price, £	Offer Price, £
<b>F16530</b>	30 to 300	-15 to 60	510 x 790 x 560	9570.00	6699.00

## Benchmark Incu-Shaker™ Mini CO<sub>2</sub>

2  
YEARS

Benchmark  
Scientific

Ideal for the culturing of non-adherent cells, combines a precision CO<sub>2</sub> incubation chamber with an integral orbital shaker, providing the optimum conditions for suspension cell culture. The six-side heating system with a low speed internal fan uniformly spreads air throughout the stainless steel chamber. The included platform (9.5 x 11.5 in) can be used for low speed shaking of a variety of laboratory vessels, including Erlenmeyer flasks, culture plates and media bottles.

- Precise monitoring over CO<sub>2</sub> with dual beam IR sensor
- Provides high levels of temperature accuracy with minimal fluctuation (within 0.1°C)
- Beltless motor drive provides horizontally circular shaking motion at 19mm orbit

30%  
OFF



Code	Temp Range, °C	Speed Range, RPM	CO <sub>2</sub> Range, %	Dims, w x d x h, mm	List Price, £	Offer Price, £
<b>F14958</b>	+5 to 50	30 to 300	0 to 20	420 x 465 x 553	9898.00	6929.00

# Innovative lab tools to inspire fresh thinking



Oxygen  
(The Essential Molecule)

We give our scientific community all the solutions, products and support they need to keep innovating for a better future. That's the Chemistry of Science.

**For more information or to purchase visit [scientificlabs.co.uk](https://scientificlabs.co.uk) and search for "Thermo Scientific™"**

## SLS Lab Pro Analogue Ultrasonic Baths

3 YEARS

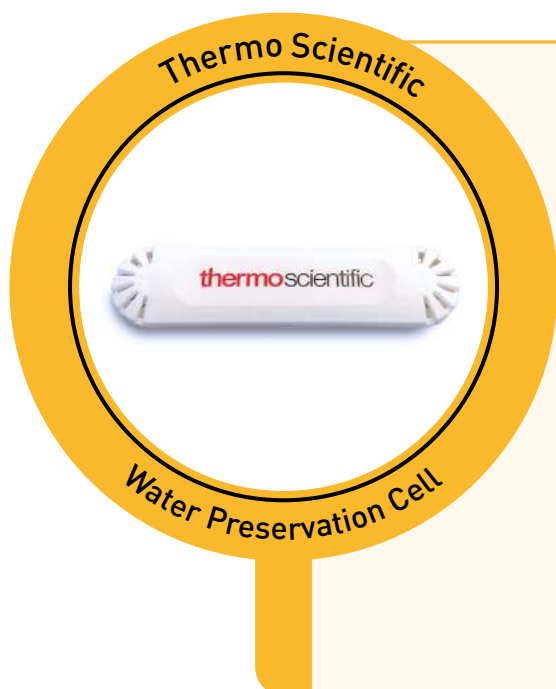


With capacities from 1.5L to 25L, the SLS Lab Pro Analogue baths offer simple analogue timer and temperature controls, providing entry level ultrasonic baths ideal for cleaning small items for use in a wide range of applications. Supplied with a stainless steel basket and plastic lid.

- Ambient to 70°C temperature control on heated models
- 0 to 15 minute timer
- Compact and user-friendly



Code	Capacity, L	Heating Bath	Int Dims, w x d x h, mm	Overall Dims, w x d x h, mm	List Price, £	Offer Price, £
<b>F17206</b>	1.5	No	150 x 140 x 100	180 x 160 x 190	305.00	244.00
<b>F17208</b>	1.5	Yes	150 x 140 x 100	180 x 160 x 190	356.00	285.00
<b>F17210</b>	2.5	No	240 x 140 x 100	270 x 170 x 210	390.00	312.00
<b>F17214</b>	2.5	Yes	240 x 140 x 100	270 x 170 x 210	451.00	361.00
<b>F17216</b>	4.5	Yes	300 x 150 x 150	330 x 180 x 275	756.00	605.00
<b>F17218</b>	13	Yes	330 x 300 x 150	375 x 345 x 275	964.00	771.00
<b>F17220</b>	25	Yes	500 x 300 x 200	550 x 345 x 365	1367.00	1094.00



### Thermo Scientific Aqua-Tec Water Preservation Cell

- Designed and tested for use in CO<sub>2</sub> incubators and water baths
- Proven effective for up to 6 months against bacteria, molds, and fungi
- Eliminate the need to handle dangerous chemicals or expose sensitive cells
- Easy to use in equipment from any manufacturer

Code	Pack	List Price, £
<b>WAT1200</b>	4	363.00





**35%  
OFF**

## PYREX® Heavy Duty Beakers

Borosilicate glass with white graduations and marking spot.

Code	Capacity, mL	Pack	List Price, £	Offer Price, £
<b>F17146</b>	150	12	86.00	56.00
<b>F17148</b>	250	12	107.00	69.00
<b>F17150</b>	400	12	120.00	78.00
<b>F17152</b>	600	6	69.00	45.10
<b>F17154</b>	1000	6	103.00	67.00
<b>F17156</b>	2000	4	126.00	82.00
<b>F17158</b>	3000	1	153.00	99.00
<b>F17160</b>	4000	1	154.00	100.00
<b>F17162</b>	5000	1	266.00	173.00

## Grant Aqua Pro Shaking Water Baths



grant

The Aqua Pro shaking water bath range offers exceptional temperature performance and usability. With three bath models to choose from, there is a shaking water bath to meet basic and demanding applications in research, industry and life sciences. Includes clear polycarbonate lid and universal tray included as standard, other shaking trays sold separately.

- Temperature range: ambient +5 to 99°C
- Stability: ±0.1°C
- Digital control/LED display
- Linear shaking speed 20 - 200 RPM
- Adjustable shaking speed and stroke length (OLS26)

**25%  
OFF**



Code	Model	Capacity, L	Shaking Mode	Ext Dims, w x d x h, mm	Int. Dims, w x d, mm	List Price, £	Offer Price, £
<b>F151240</b>	OLS26	26	Orbital + Linear	325 x 565 x 335	380 x 235	2650.00	1988.00
<b>F151241</b>	LSB12	12	Linear	275 x 360 x 335	240 x 235	1890.00	1418.00
<b>F151242</b>	LSB18	18	Linear	275 x 595 x 335	420 x 235	2150.00	1613.00

## Grant Optima™ Heated Circulating Baths



grant

The Grant Optima™ series of heating circulating baths offer accurate temperature control for general applications. The heating circulator can be used in combination with any Grant stainless steel or plastic tank or with a clamp for independent use of virtually any vertical sided tank.

- Stability  $\pm 0.05^{\circ}\text{C}$ , uniformity  $\pm 0.1^{\circ}\text{C}$
- 3 programmable temperature presets
- Low liquid protection and fixed over temperature cut-out
- Visual alarm – alerts you when your attention is required
- Clear, bright 4 digit LED display
- Simple, intuitive user interface



Code	Capacity, L	Temp Range, $^{\circ}\text{C}$	Timer	Dims, w x d x h, mm	List Price, £	Offer Price, £
<b>F17230</b>	5	0 to 100	—	120 x 172 x 333	935.00	748.00
<b>F17232</b>	5	-15 to 120	1 min to 99 hrs 59 min	141 x 172 x 333	1070.00	856.00

## Grant Optima™ Advanced Heating Circulators



grant

Combine any of the models with a Grant stainless steel or plastic tank, or use independently with a clamp.

- Outstanding temperature control
- Temperature stability:  $\pm 0.01^{\circ}\text{C}$
- Large, bright full colour display
- Timer: 1 min to 99 hrs 59 mins
- High performance integral pump for external circulation
- USB/RS232 interface
- Low-liquid detection (float switch)



Free Labwise® PC software - a powerful and convenient software package for programming, controlling and recording key parameters of high performance baths and circulators in the Grant Optima™ range.

Code	Temp Range, $^{\circ}\text{C}$	Programmable	Max Flow Rate, L/min	Max Pump Pressure, mbar	List Price, £	Offer Price, £
<b>F17234</b>	5 to 150	1 program / 30 segments	18	310	1220.00	976.00
<b>F17236</b>	5 to 200	10 programs / 100 segments	22	530	1560.00	1248.00

## SLS Lab Pro PURA-Q+ Type 1 and 2 Water Purification



Combines ultrapure and DI water in one unit saving you money and space. Type 2 water is ideal for buffer, reagent & media preparation, sample dilution and general chemistry. Type 1, dispensed direct from the unit or using an optional remote dispenser, is perfect for the most sensitive applications such as cell & tissue culture, molecular biology, electrophoresis, chromatography & spectroscopy.

**50% OFF**



- Intuitive, icon-based, interactive user interface with touchscreen
- Up to 2L/min ultrapure water with volumetric dispense
- Variable make up rate up to 25L/hr
- Mount on-bench, under-bench or on the wall
- Continuous TOC monitoring
- Low endotoxin, RNase, DNase and protease options available

Code	Model	Dispenser	List Price, £	Offer Price, £
<b>F17184</b>	+20 UF	Integrated	10885.00	5315.00
<b>F17186</b>	+20 UF R	Remote	11352.00	5545.00

## Reservoirs

Code	Capacity, L	Description	Dims, w x d x h, mm	List Price, £	Offer Price, £
<b>F151364</b>	30	Storage reservoir	405 x 230 x 495	932.00	470.00
<b>F151365</b>	60	Storage reservoir	480 x 330 x 495	1089.00	535.00
<b>F151366</b>	100	Storage reservoir	480 x 360 x 810	1588.00	775.00
<b>F17188</b>	100	Storage reservoir with pump	480 x 360 x 810	2730.00	1340.00



## Corning® Cell Culture Grade Water

Cell culture grade water tested to USP specifications. Sterile water for injection.

Supplied in packs of 6

**OVER 45% OFF**

Code	Volume, mL	List Price, £	Offer Price, £
<b>F16142</b>	100	59.00	27.80
<b>F16144</b>	500	46.10	23.80
<b>F16148</b>	1000	71.00	36.40

## WTW InoLab Multi 9310P Multiparameter Meter Bundle

3 YEARS

WTW  
a xylem brand

The WTW inoLab® 9310 single channel instrument provides easy to use and calibrate menu-driven operation ideal for the laboratory. Can accurately measure pH, ORP, conductivity, and DO/BOD.

- Input for pH, ORP, DO/BOD, or conductivity sensors
- Intelligent, digital sensors - plug and play connectivity
- Built in printer
- Data storage - 500 data sets in manual and 5,000 in automatic mode
- USB connectivity to manage data
- GLP traceability (sensors store serial and calibration data)
- Durable electrode stand included

### Bundle includes:

9310P meter, Sentix 980-P high quality glass platinum membrane pH electrode for universal applications, 1.5m cable for attaching pH electrode to meter and wireless kit allowing the pH probe to be used wirelessly.

30% OFF



Code

List Price, £

Offer Price, £

F14680

2039.00

1427.00

## Buchi Rotavapor® R-100 Rotary Evaporators

1 YEAR

BUCHI

The Rotavapor® R-100 is a high-quality rotary evaporator to meet the essential needs in classical laboratory applications. It is capable of a manually adjustable rotation speed of 20 to 280 RPM and equipped with an action jack lift for manual lifting of the evaporating flask. The optional I-100 interface is an easy to use interface that controls the vacuum digitally. It is optimally suited to on/off-regulate the vacuum pump V-100.

- Temperature range: 20 - 95°C (with heating bath B-100)
- Flask size range: 50 - 400mL

10% OFF



Unavailable in Northern Ireland

Code

Description

List Price, £

Offer Price, £

Code	Description	List Price, £	Offer Price, £
F151258	R-100 rotary evaporator with vertical glass assembly and safety coating	2595.00	2336.00
F151263	R-100 rotary evaporator with vertical glass assembly, safety coating, I-100 interface and V-100 vacuum pump	4857.00	4371.00
F151264	R-100 rotary evaporator with vertical glass assembly, safety coating, F-100 recirculating chiller, I-100 interface and V-100 vacuum pump	6626.00	5963.00
F151265	R-100 rotary evaporator with vertical glass assembly, safety coating, F-105 recirculating chiller, I-100 interface and V-100 vacuum pump	7185.00	6467.00
F151259	R-100 rotary evaporator with cold trap assembly and safety coating	2744.00	2469.00
F151266	R-100 rotary evaporator with cold trap assembly, safety coating, I-100 interface and V-100 vacuum pump	4997.00	4497.00
F151261	V-100 vacuum pump with Woulff bottle	1539.00	1385.00
F151260	V-100 vacuum pump with Woulff bottle and I-100 interface	2519.00	2267.00
F151262	I-100 interface for V-100 vacuum pump	981.00	883.00

## KNF Laboport® Type N 96 Vacuum Pump

2 YEARS

KNF

The smallest chemical resistant pump in the new Laboport® series, the N 96 combines a high flow rate with a compact design, saving valuable space in the laboratory. Thanks to the manual rotational speed control, the N 96 is quiet, very energy efficient, and can be optimally adjusted in accordance with the application. Potential applications include filtration, SPE, and liquid aspiration using a vacuum.

- Flow rate of 0.3 – 0.42m<sup>3</sup>/h, ultimate vacuum of <130 mbar abs
- Very small footprint
- Integrated rotational speed control
- PTFE-coated diaphragm for use with aggressive/corrosive gases and vapours
- Easy to clean surface



25% OFF

Code	Delivery, L/min	Ultimate Vacuum, mbar	Dims, w x d x h, mm	List Price, £	Offer Price, £
F14994	7	<130	75 x 156 x 119	374.00	281.00

## KNF Laboport® Type N 820G/N 840G Vacuum Pumps

2 YEARS

KNF

The N 820 G and N 840 G feature a control knob for manual adjustments of the flow rate. Due to the integrated rotational speed control, the pumps are quiet, very energy efficient, and can be optimally adjusted. These pumps are ideal for working with extremely aggressive/corrosive gases and vapours. Potential applications include rotary evaporation, distillation, gel drying, degassing, use by vacuum ovens and vacuum concentrators.

- Adjustable flow rate of up to 2.04m<sup>3</sup>/h
- Ultimate vacuum of 6 mbar abs
- 3-colour status display: in operation/stand-by/error
- ATEX-compliant in accordance with II 2/-G IIB+H2 T3 internal atmosphere only
- 100% oil-free transfer to ensure uncontaminated transfer, evacuation and compression

25% OFF



Code	Model	Delivery, L/min	Dims, w x d x h, mm	List Price, £	Offer Price, £
F14996	N 820 G	20	163 x 259 x 220	1586.00	1190.00
F14998	N 840 G	34	177 x 289 x 240	1745.00	1309.00

## Welch MPC Chemical Duty Vacuum Filtration Diaphragm Pump

1 YEAR

WELCH

Suitable for vacuum filtration and desiccation applications. The standard equipment of a high accuracy regulator allows for soft start filtration, to prevent damage to the filter membrane, whilst allowing a powerful final vacuum level to be achieved for fast results. A built-in catch pot prevents accidental ingestion of liquid into the pump.

- Chemical resistant
- Oil free
- Two heads, one stage
- Ultra quiet operation and long service life

25% OFF



Code	Flow Rate, L/min	Ultimate Vacuum, mbar	Dims, w x d x h, mm	List Price, £	Offer Price, £
F151714	15	100	144 x 198 x 244	740.00	555.00

## Welch 2522 WOB-L Piston Pump

1 YEAR

WELCH

Simplicity is the key to the design of the WOB-L piston pumps. As the piston wobbles, air resistance on the upward stroke expands the PTFE seal on the piston to increase efficiency while compensating for the wobble action. WOB-L piston pumps come accessorised as standard including pressure and vacuum gauges & regulators, inlet catch pot and exhaust silencer.

All pumps are supplied with a carrying handle for easy portability.

Suitable for use with aqueous fumes including buffers.

Not recommended for pumping acidic, basic, or organic fumes.

- Analytically pure, oil free vacuum
- Lightweight and portable
- Compact design
- Suction cup feet for stability
- Designed for permanent operation

25% OFF



Code	Delivery, L/min	Ultimate Vacuum, mbar	Max Overpressure, mbar	List Price, £	Offer Price, £
F17040	18	133	7.9	584.00	438.00

## Getinge Lancer ULTIMA 820LX Undercounter Labware Washer Dryer

1  
YEAR

GETINGE ✱

The ULTIMA series under counter washers offer a range of efficient labware loading options using baskets and injector racks. The compact footprint maximises valuable research space and high density loading demands fewer cycles. Efficient use of water, detergents and rinsing agents minimises the environmental impact. The exclusive Prolux programmable microprocessor controller commands a full range of prewash, wash, rinse and drying functions through simple touchscreen menus.

- Touchscreen controller 3.5" colour stores up to 40 programs
- Wash temp up to 95°C
- 2 chemical dosing pumps to dispense detergent and acid rinse
- 2 chemical level sensors
- On board chemical storage
- 2 wash levels and runner positions
- 4 preset cycles and 36 custom programmable cycles
- Forced-air drying, Injectors and HEPA filtered
- Additive level sensor

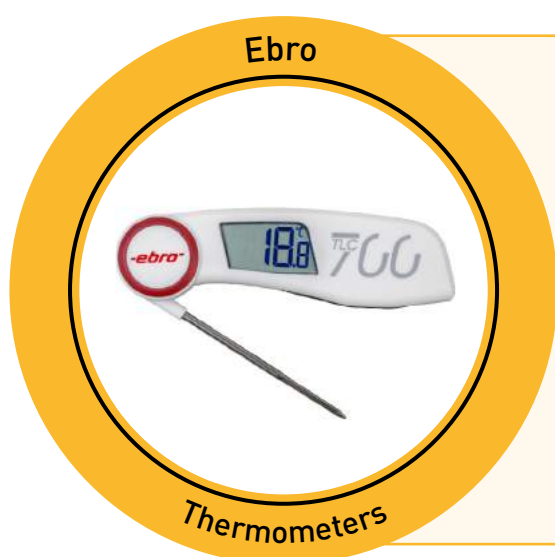


27%  
OFF

**Delivery not included**  
**\*Installation/commissioning and service contract excludes Northern Ireland**

Supplied with 1 x 10L bottle of detergent and 1 x 10L bottle of rinseaid. Includes installation and basic commissioning by a Getinge engineer and first year service contract with preventative maintenance service visit.\*

Code	Capacity, L	Dims, w x d x h, mm	List Price, £	Offer Price, £
<b>F9676</b>	140	909 x 739 x 850	13650.00	<b>9999.00</b>



### Ebro TLC Folding Thermometers

Small size, foldable penetration probe for safe storage and waterproof (IP 65).

25%  
OFF

Code	Description	List Price, £	Offer Price, £
<b>F17042</b>	TLC 700 folding thermometer	47.30	<b>35.50</b>
<b>F17044</b>	TLC 750i folding thermometer with infrared sensor	105.00	<b>79.00</b>

# Astell Ecofill Compact Top Loading Autoclave



The 'Ecofill' version of Astell's compact top-loading range has an integral reservoir and an in-built 'autofill' water re-circulation system. Once the reservoir is filled, this provides water for up to 15 cycles, and also acts as a collection vessel for condensate and the water that is automatically returned from the chamber at the end of each cycle, minimising water usage.

- Multi-programmable controller (up to 50 cycles)
- An electropolished stainless steel chamber
- A self-contained design with no installation required - just fill it with water and plug it in and the machine is ready to be used



Code	Alt Ref	Capacity, L	Chamber Dims, Ø x d, mm	Overall Dims, w x d x h, mm	Weight, kg	List Price, £	Offer Price, £
F17026	AMA240	63	346 x 668	530 x 705 x 1070	130	10380.00	8304.00



## EXCLUSIVE OFFER WITH THIS SLS FOCUS!

EcoFill autoclaves usually cost more than their Classic Fill equivalent, but check out the great deal in this SLS Focus.

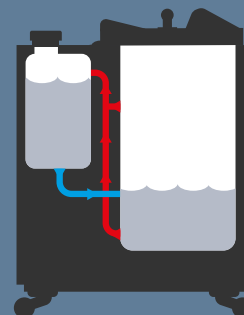
### Classic Fill

autoclaves require regular refilling with fresh water.



### EcoFill

autoclaves capture used steam & water, with which they refill themselves.



All Astell autoclaves are designed for low power and water consumption. Astell's EcoFill autoclaves use even less.





Chamber manufactured from bright polish stainless steel lagged with high efficiency thermal insulation. Digital temperature control up to 250°C with program feature run back timer. Over temperature auto set and over temperature protection. Single insulated door, lockable with 2 point door engagement for an even seal.

- Door chime when left open
- Anti-bacterial paint finish
- Temp range ambient +5°C to 250°C
- PID digital LED display showing actual or set temperature, resolution 0.1°C
- Fan convection from 0% variable to 100% for forced air circulation
- Temperature sensor fail alarm with error reporting
- Shelf runners adjustable in 20mm steps vertically

**20% OFF**



Code	Capacity, L	Supplied with	Shelf Positions	List Price, £	Offer Price, £
<b>F16482</b>	60	2 x stainless steel shelves	5	1583.00	1266.00
<b>F16484</b>	110	2 x stainless steel shelves	8	2000.00	1600.00
<b>F16486</b>	250	3 x stainless steel shelves	10	2500.00	2000.00



## PYREX® Heavy Duty Measuring Cylinders

Complies with ISO 4788. Borosilicate glass with graduations and inscriptions in blue enamel.

Code	Capacity, mL	Graduations, mL	Pack	List Price, £	Offer Price, £
<b>F17164</b>	50	1	2	59.00	38.00
<b>F17166</b>	100	1	2	68.00	44.00
<b>F17168</b>	250	2	2	93.00	60.00
<b>F17170</b>	500	5	2	127.00	82.00
<b>F17172</b>	1000	10	2	166.00	108.00
<b>F17174</b>	2000	20	5	639.00	415.00

**35% OFF**

## SLS Lab Pro Laboratory Incubator



Chamber manufactured from bright polish stainless steel lagged with high efficiency thermal insulation. Digital temperature control up to 80°C with program feature run back timer. Over temperature auto set and Class 1 over temperature protection. Single insulated door, lockable with 2 point door engagement for an even seal.



- Door chime when left open
- Inner clear polycarbonate door
- Anti-bacterial paint finish
- Temperature range ambient +5°C to 80°C
- PID digital, LED display showing actual or set temperature, resolution 0.1°C
- Gravity natural convection
- Temperature sensor fail alarm with error reporting
- Shelf runners adjustable in 20mm steps vertically



Code	Capacity, L	Supplied with	Shelf Positions	List Price, £	Offer Price, £
<b>F16476</b>	60	2 x stainless steel shelves	5	1433.00	1146.00
<b>F16478</b>	110	2 x stainless steel shelves	8	1833.00	1466.00
<b>F16480</b>	250	3 x stainless steel shelves	10	2833.00	2266.00

## Benchmark SureTherm™ CO<sub>2</sub> Incubator



With precise temperature and CO<sub>2</sub> control, Benchmark's SureTherm™ Incubators provide the perfect environment for your cultures. Features a proprietary heat distribution system that combines six sided heating with a low speed internal fan. Air is circulated uniformly throughout the chamber without air exchange from the external environment. This results in a controlled, protected environment with minimal temperature fluctuations (within 0.1°C).

- Temperature range: ambient +5° to 60°C, uniformity: ±0.4°C, increments: 0.1°C
- CO<sub>2</sub> range: 0 to 20%, accuracy: ±0.1%
- CO<sub>2</sub> sensor: dual beam IR CO<sub>2</sub> sensor



Code	Capacity, L	Int Dims, w x d x h, mm	Ext Dims, w x d x h, mm	List Price, £	Offer Price, £
<b>F17228</b>	45	335 x 361 x 392	420 x 465 x 553	5865.00	4692.00

# Olympus CM20 Incubation Monitoring System

The Olympus CM20 incubation monitoring system provides quantitative data about the health and confluency of cell cultures while they are in the incubator. The imaging unit is located in the incubator and automatically scans multiple points in a culture vessel to provide data. Keep track of your cell cultures' health while they remain safely in the incubator reducing the risk of damage caused by temperature change, vibration, or contamination. There is no need to stain or peel the cultures to check their status since the system acquires data from label-free cells. With a digital record of cell growth and health, you can store, reuse and transfer your data, compare it with past results or compare it with data captured under different conditions.

- Thin, compact design, can be installed in confined spaces
- Compatible with a range of cell culture vessels such as Petri dishes, microplates and flasks
- Imaging unit has flat-top scanner optics concept with 630nm LED epi-oblique illumination
- Control unit has CM20 software installed allowing 13 user accounts, 4 users can login simultaneously
- Imaging unit and control unit must be purchased separately
- Up to 4 imaging units can be connected to a single control unit



**Installation by an Olympus Engineer is required and is charged separately**

**Unavailable in Northern Ireland**

Code	Description	List Price, £
COU6002	Control unit for CM20	9692.00
COU6004	Imaging unit of CM20	8952.00



## Reusable Nanotech Face Mask

Premium and sustainable, made from nanotech coated 3-layered 100% cotton. Washable up to 100 times.

Code	Size	List Price, £
COV1018	Medium	0.99
COV1016	Large	0.99

SCIENTIFIC LABORATORY SUPPLIES PRESENTS

# FOCUS

EXCLUSIVE OFFERS & EXCITING NEW PRODUCTS

See page 31...

**35%  
OFF**



Scientific Laboratory Supplies  
Wilford Industrial Estate  
Ruddington Lane  
Nottingham, NG11 7EP  
United Kingdom

t. England & Wales: +44 (0)115 982 1111  
Scotland: +44 (0)123 643 1857  
Northern Ireland: +44 (0)28 9262 1100  
Republic of Ireland: +353 (0)1 4069 464  
International: +44 (0)115 977 5060  
East Africa: +254 (0)728 156294

[www.scientificlabs.co.uk](http://www.scientificlabs.co.uk)

## **OHAUS Guardian 5000 Hotplate Stirrers**

Consistent stirring performance and temperature control. LCD display, chemical resistant SmartHousing™ and SafetyHeat™

**SPRING** EDITION

**2022**