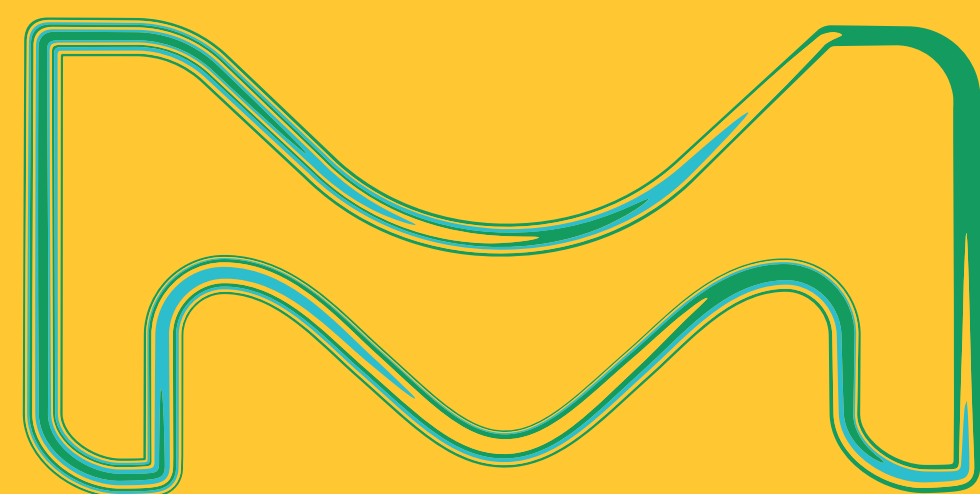


HPLC COLUMN selection guide

Quality perfected for the intended use



Not for distribution, to be used only
on Merck/MilliporeSigma devices

The life science business of Merck operates
as MilliporeSigma in the U.S. and Canada.
MK_PG3274EN

Supelco[®]
Analytical Products

Would you like
**Information on
columns for QC?**

Are you working with
Large Molecules
or **Biopolymers?**

Are you working
with **Small
Molecules?**
Explore the **Ascentis®
Express Range**

Would you like
**Information on
columns for QC?**

x

Searching for Size
Exclusion (SEC) or Ion
Exchange (IEX) options?
**Please contact
your specialist**

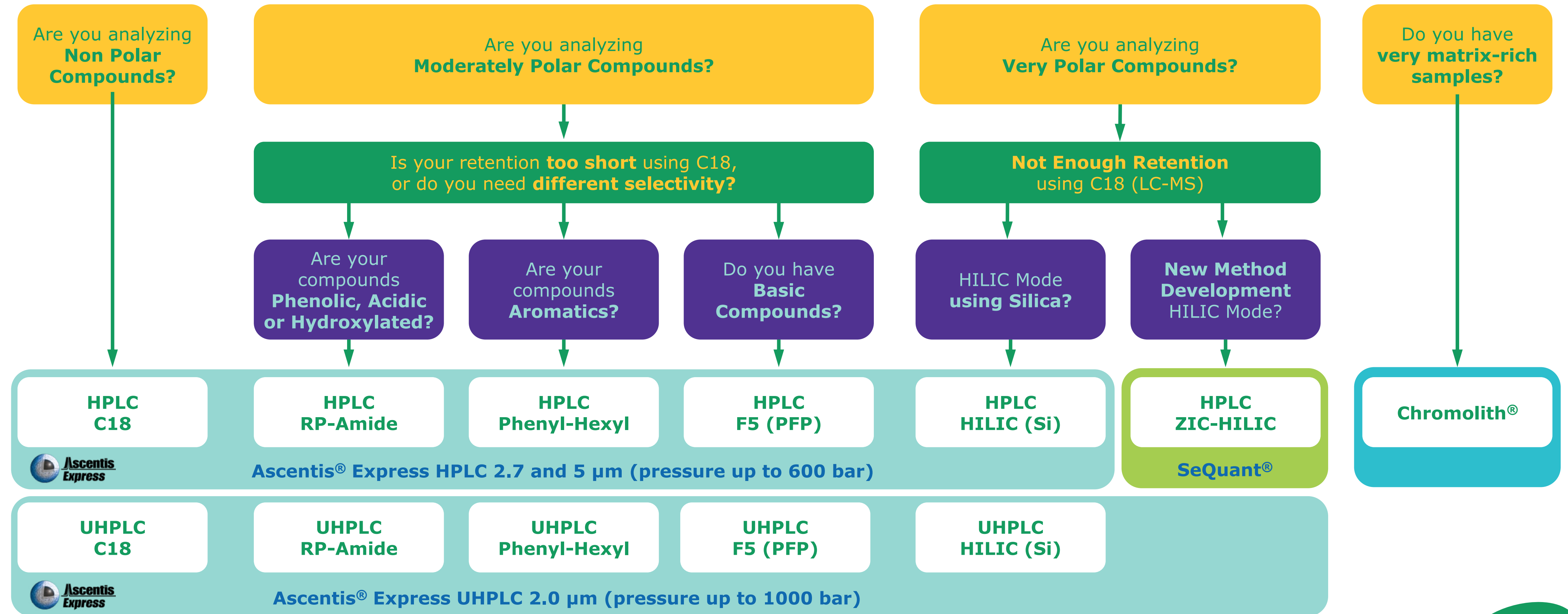
Are you working with
Large Molecules
or **Biopolymers?**

Are you working
with **Small
Molecules?**
Explore the **Ascentis®
Express Range**

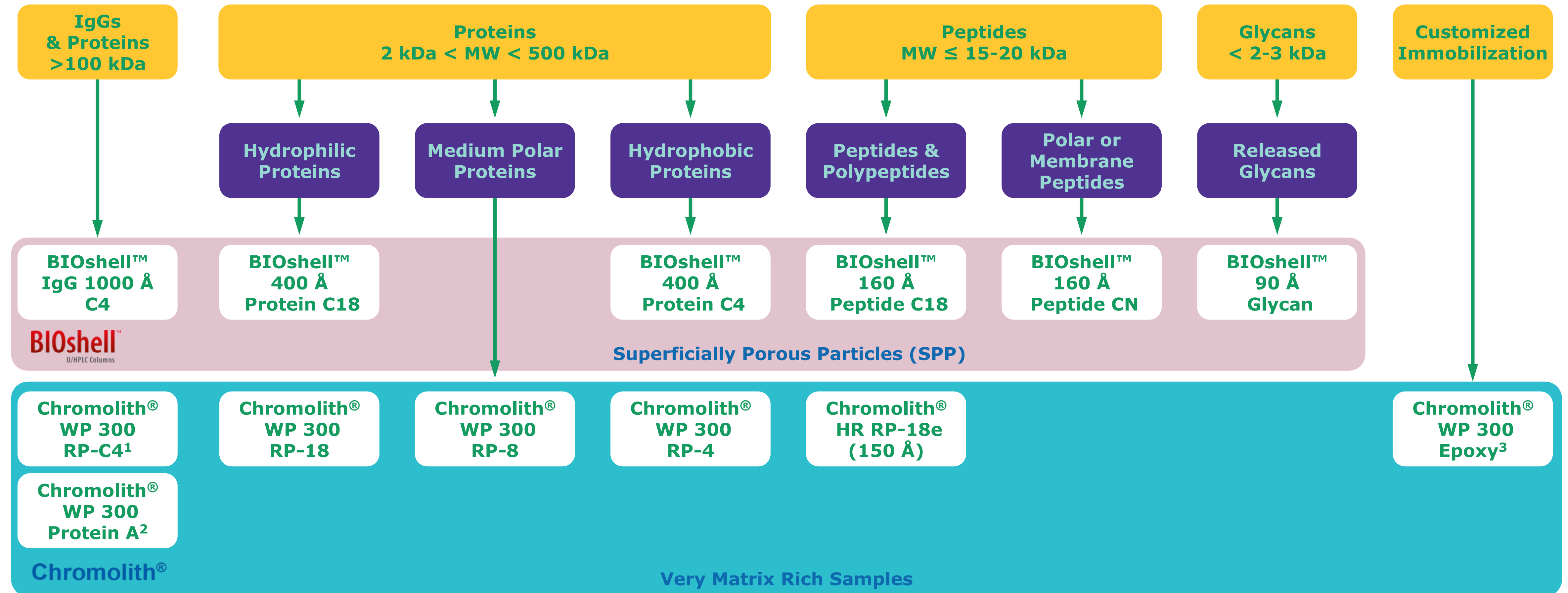
Our
Recommendation
is the
BIOshell™ Range

For the Porous Particle
range (which can be **scaled
up for production**)
our Recommendation is
Discovery® Range

UHPLC/HPLC Analysis of Small Molecules



UHPLC/HPLC Analysis of Large Molecules (Proteins, Peptides or Glycans)

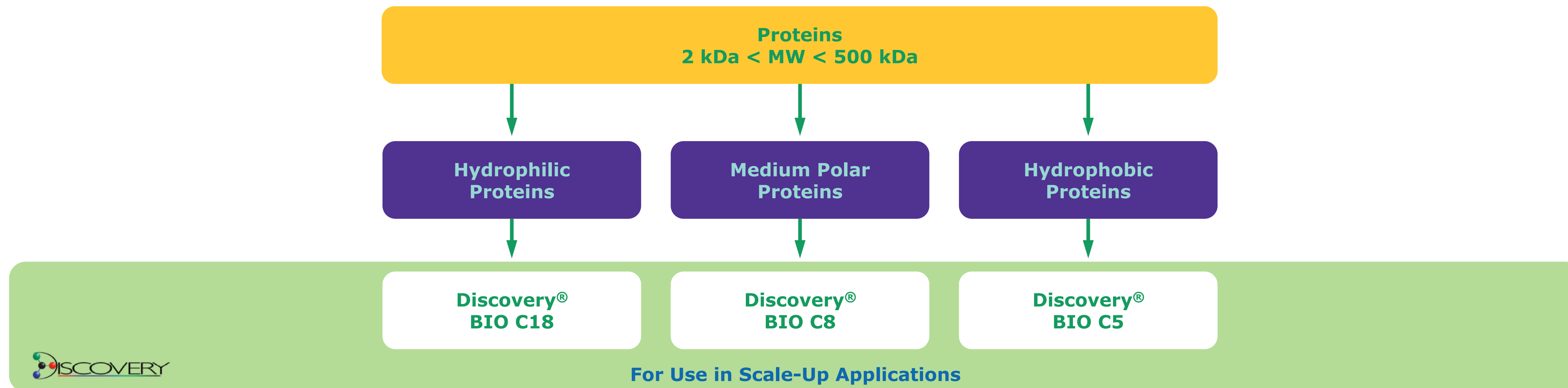


¹ The Chromolith® WP 300 C4 consists of a macropore volume of 2 μm (20,000 Å) enabling the separation of very large molecules

² Affinity chromatography for specific binding of IgGs

³ For customized immobilization on demand

UHPLC/HPLC Analysis of Large Molecules using fully porous particles (FPP)



LC solutions for small and large molecules

Contact your specialist for more details

Purospher® STAR (120 Å)

- Outstanding peak symmetry
- Stable from pH 1.5 - 10.5
- Perfect reproducibility (Masterbatch)
- 100% aqueous phase compatible

SeQuant® (100, 200 Å)

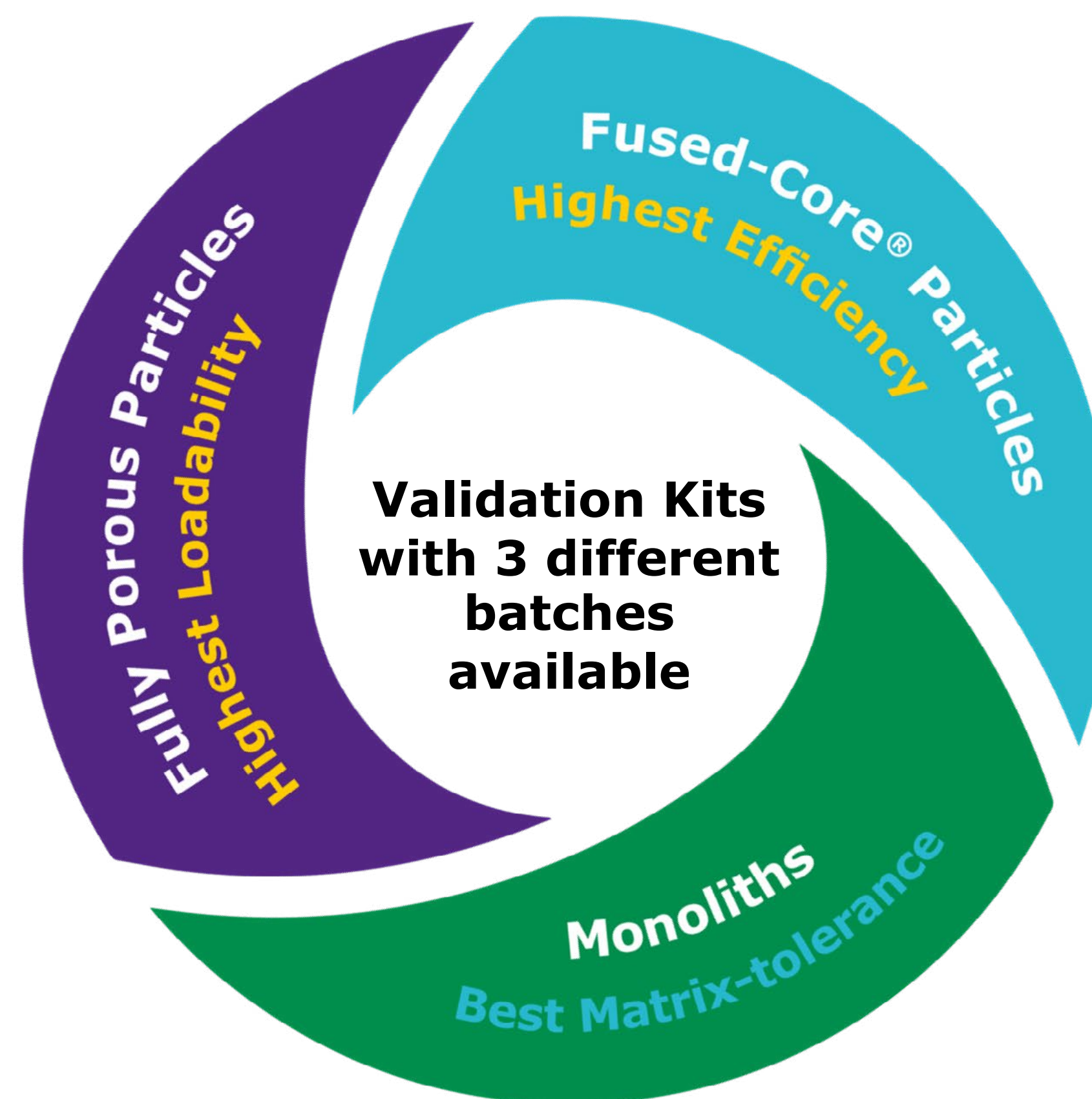
- Choice of three phases with zwitterionic functionality designed for HILIC mode
- Suitable for LC-MS use

Ascentis® / Discovery®

- Wide range of phases

Discovery® BIO (300, 1000 Å)

- Three choices for reverse-phase mode and two choices for ion exchange mode



Ascentis® Express (90 Å)

BIOshell™ (160, 400, 1000 Å)

- Outstanding column efficiency
- Fast, efficient separations on HPLC and UHPLC
- Wide range of phases
- Available in micro format

Chromolith® (150 Å)

Chromolith® WP (300 Å)

- Rugged and robust technology
- Analysis of matrix-rich samples
- Low backpressure
- Increased column lifetime
- Available in micro format