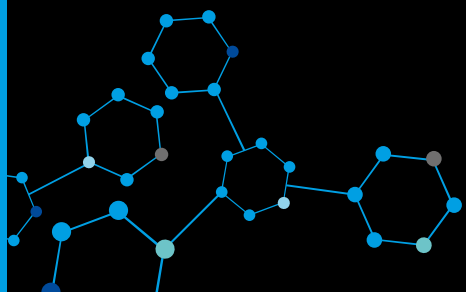




**SCIENTIFIC  
LABORATORY  
SUPPLIES**

**SLS Biotech Solutions**



## About us...



SLS first began trading in 1991 and, since then, we have grown to become the UK's largest independent supplier of laboratory equipment, chemicals and consumables. Because of our independence, we are unique in our approach to sourcing and supplying the highest quality, best value products and brands.

We provide precisely what you need, exactly when you need it, whether you're searching for something specific or aiming to equip an entire laboratory. Whatever you are looking for, you can be sure our team will take care of you and provide a dedicated service that's designed entirely around you and your business.

From pipettes and petri dishes to the latest in laboratory instrumentation, we pride ourselves on the quality of products and the service we provide. However specific your needs, you can be sure we'll deliver precisely the quality you need.

# CONTENTS

## Jump to...

### Evolution of SLS



### Safety



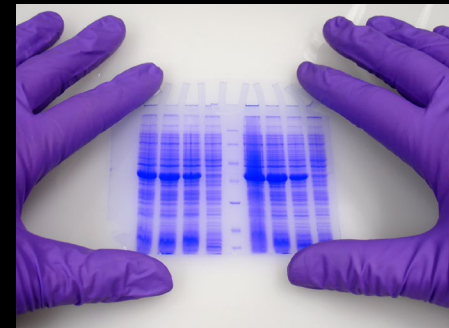
### 3D Cell Culture



### Sample Prep



### Electrophoresis



### qPCR



### ELISA



### Chromatography

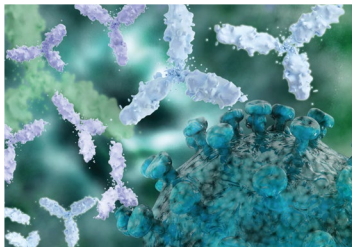
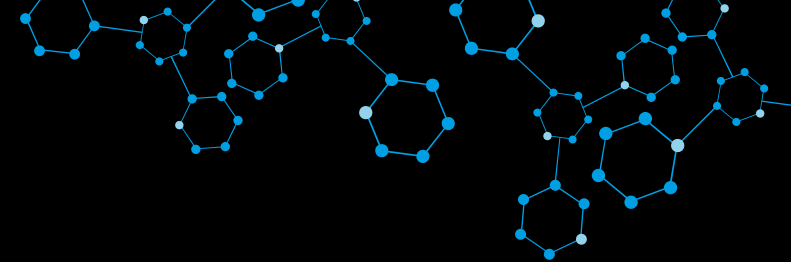
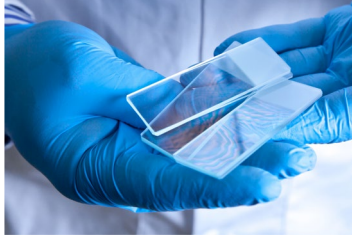


## Plus, spotlight on sustainability

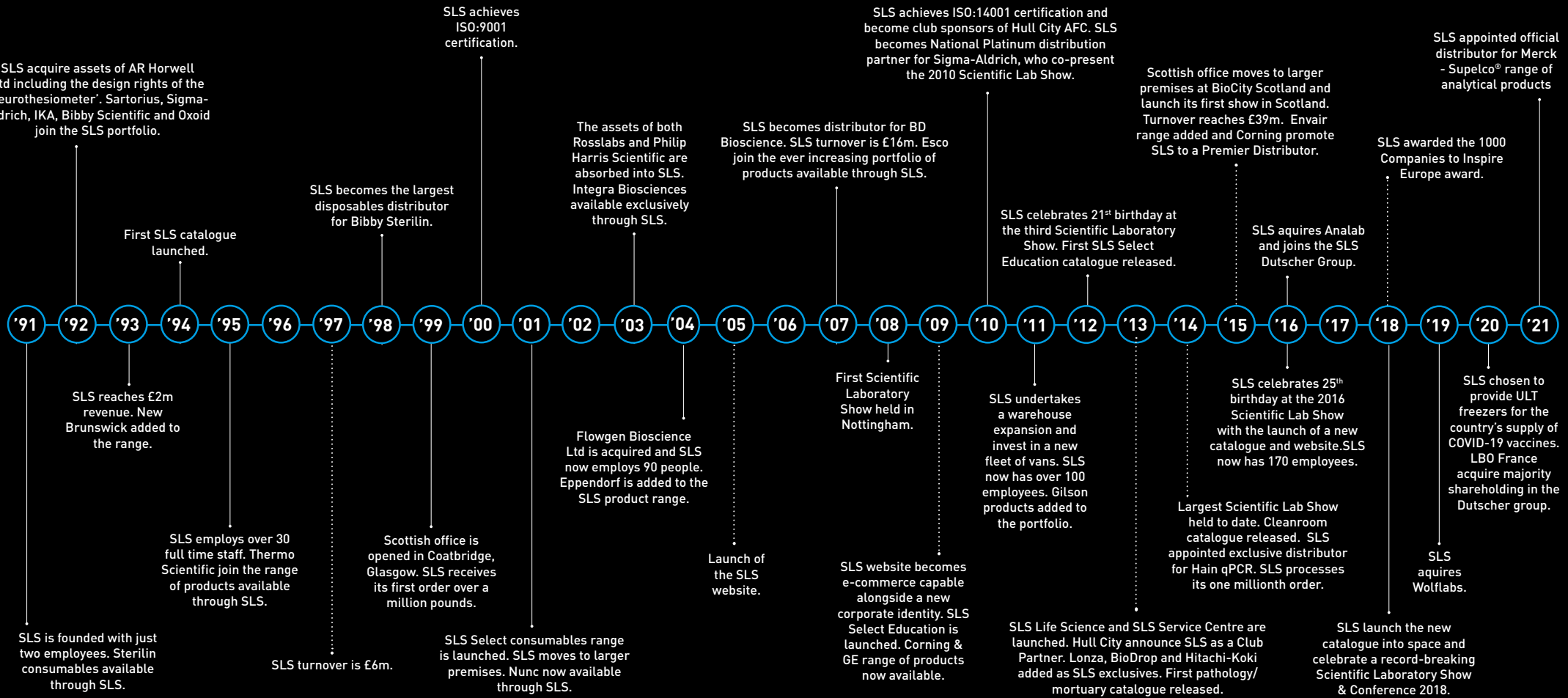


# THE EVOLUTION OF SLS

A lot has changed in 30 years...



## SLS ACHIEVEMENTS



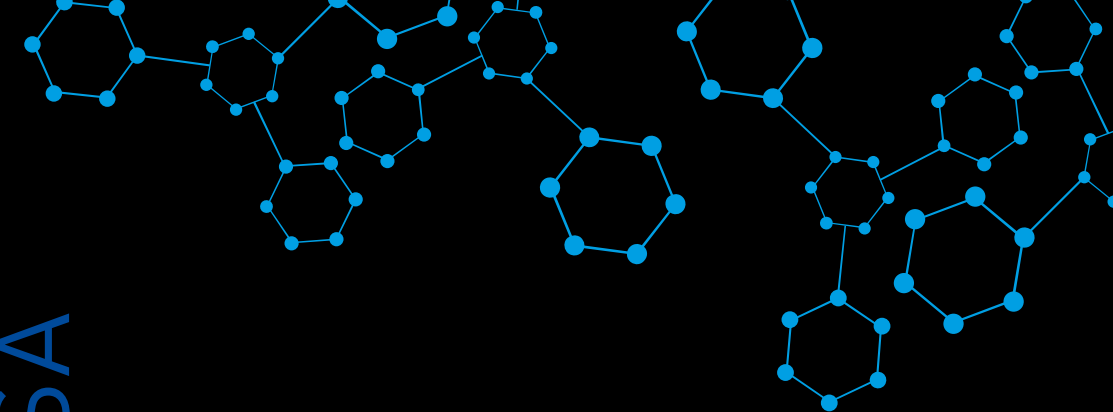
Scientific Laboratory Supplies: Delivering Precisely the Quality You Need



ANALYSE  
WORKFLOWS  
SAFETY  
SAMPLE PREP  
APPLICATION  
PPE  
3D CELL CULTURE  
EXTRACTION

BIOTECH  
ELISA  
QPCR  
ELECTROPHORESIS  
LIFE SCIENCES  
CHROMATOGRAPHY  
BIOPHARMA  
RNA  
SLS

CHEMICALS



# Spotlight on: SAFETY

SLS are partnered with some of the most respected brand names in the Safety and PPE industry. We're able to offer top quality products at a competitive price. We offer head to toe safety solutions for all your PPE requirements and can work with you to create a tailored safety solution to keep your employees safe.

Key brand names include:

- 3M
- Bolle
- Kimberly-Clark
- Portwest
- Shield Scientific
- Diversey
- SLS Select
- Ansell
- Uvex
- GlovePlus

## Safety



### Head Protection

- Safety helmets – various colours
- Helmet accessories - ear defenders, sweatbands, lighting, reflective sticker, company logos
- Bump caps – various colours
- Safety baseball caps with/without integral respiratory protection
- Bouffant caps
- Mob caps



SAF9580



### Workwear

- Traditional/corporate workwear - polo shirts, sweatshirts, fleeces, coats, soft shell jackets, shirts, blouses, trousers, skirts - all available in various colours and with company logos
- Disposable workwear - coveralls, overshoes/boots, oversleeves, aprons, hoods, mob/cloth caps, bouffant caps, lab coats, gowns, chemical, high visibility.



SAF0304



### Eyewear

- Safety glasses - all shades, mens and ladies
- Prescription eyewear
- VDU eyewear
- Safety goggles – mens and ladies, autoclavable goggles, single use sterile goggles
- Full face shields, covid face shields



SAF1868



### Hand Protection

- Disposable nitrile, vinyl, latex gloves - sterile and non-sterile
- Heat protective gloves
- Cut resistant gloves
- Chemical reusable gloves
- Cryogenic gloves
- Mechanical handling gloves - including ESD gloves
- Needle stick gloves



SAF5682



### Respiratory

- Respirators – disposable respirators (FFP1, FFP2, FFP3), full face respirators, positive pressure air fed respirators, chemical/smoke escape respirators
- Silicone half masks
- All filters to suit reusable masks
- Face fit test kits
- Medical type IIR masks



SAF8441



### Footwear

- Safety boots and trainers
- Corporate safety shoes
- Ladies range of footwear
- Healthcare non-safety footwear
- Washable footwear
- ESD footwear
- Wellingtons



SAF7382



### Hearing Protection

- Disposable and reusable ear plugs - various SNR's
- Ear defenders – various SNR's, helmet mounted ear defenders
- Noise level meters
- Sound noise monitors
- Radio communication ear defenders



SAF1588

SAF6480



### Other

- First aid equipment
- Spill kits – all sizes chemical/oil
- Industrial and disinfectant wipers
- Hazardous storage cabinets
- Fire safety
- Signage



SAF9600



**SCIENTIFIC  
LABORATORY  
SUPPLIES**

- 📞 England & Wales: 0115 982 1111
- 📞 Scotland: 01236 431 857
- ✉️ slsinfo@scientific-labs.com
- 🌐 scientificlabs.co.uk



# Spotlight on: 3D CELL CULTURE

SLS can supply market leading cell culture products from recognised and trusted brands such as Lonza and Corning Life Sciences.

Key product highlights:

- Corning Matrigel Matrix: the original and trusted Extra-Cellular Matrix (ECM).**  
 This natural ECM-based hydrogel is among the most widely used models for 2D and 3D cell culture *in vitro*.
- Corning spheroid plate – providing a novel solution to growing up spheroids.**  
 These ultra-low attachment microplates feature a covalently bound hydrogel layer that effectively inhibits cellular attachment and aids the formation of spheroids

## 3D Cell Culture Workflow

### Culture & Harvest Selected Cell Line

#### Media

Code	Description
LZBE12-604F	Lonza DMEM 4.5g/L Glucose with L-Glutamine 500mL
LZBE12-169F	Lonza Alpha MEM Eagle without L-Glutamine 500mL
LZBE12-117F	Lonza Medium199 with EBSS L-Glutamine with 25mM



#### Plastics

Code	Description
352340	Falcon 40µm cell strainer
4616	Corning® ultra-low attachment 25cm² cell culture flask with vent cap, rectangular, canted neck
3814	Corning® ultra-low attachment 75cm² U-shaped canted neck cell culture flask with vent cap
430168	Corning® 25cm² rectangular canted neck cell culture flask with plug seal cap
3471	Corning® Costar ultra-low attachment 6-well multiwell plates, clear, flat bottom, sterile, individually wrapped, with lid



#### Cell Counter

Code	Description
6749	Corning® cell counter

Small and easy to use cell counter with state-of-the-art image analysis software for optimal accuracy.



### Transfer to Spheroid Microplates

#### Spheroid Microplates

Code	Description
4515	Corning® spheroid microplate, 96-well, black/clear round bottom, with lid, ULA surface, sterile
4516	Corning® spheroid microplate, 384-well, black/clear round bottom, with lid, ULA surface, sterile
3387	HTS Transwell-96 permeable support with 5.0µm pore polycarbonate membrane, 8 per case, sterile
3474	Corning 96-well clear microplate, flat bottom, ULA surface, with lid, individually wrapped
7007	Corning 96-well clear microplate, round bottom, ULA surface, with lid, individually wrapped



#### Extracellular Matrices

Code	Description
356230	Corning Matrigel® Growth Factor Reduced (GFR) basement membrane matrix, 5mL
354248	Corning Basement Membrane Matrix high concentration (HC), LDEV-free, 10mL
356255	Corning Matrigel Matrix for organoid culture phenol-red free 10mL
354249	Corning Collagen I, high concentration, rat tail, 100mg
354239	Corning Ultrapure Laminin, mouse, 1mg
354250	Corning PuraMatrix™ Peptide Hydrogel, 5mL



#### CoolCell Technology

Code	Description
432021	Corning CoolBox XT purple all-day cooling and freezing workstation single capacity
432003	Corning CoolCell® LX, orange freezing container, for 12 x 1 mL or 2 mL cryogenic vials
432014	Corning CoolBox™ XT Starter complete, low profile, open platform ice-free cooler



### Monitor Growth

#### Incubators

Code	Description
E6731000012	Eppendorf CellXpert C170i CO <sub>2</sub> incubator touch screen non-segmented inner door handle, right side
E6731000022	Eppendorf CellXpert C170i CO <sub>2</sub> incubator touch screen non-segmented inner door handle, left side



#### Cell Imager

Code	Description
COU2050	Blue-Ray Biotech EzScope 101 live cell imaging system with 10x objective lens



EZScope 101 is designed to be used inside an incubator to allow 24/7 monitoring of cells, eliminating the need to remove flasks from the incubator. Images can be observed anytime with walk-away convenience and up to four samples can be monitored simultaneously in the same incubator.

### Retrieve Spheroids & Perform Further Analysis

#### Reagents

Code	Description
354235	Corning dispase, 100 mL
354253	Corning cell recovery solution, 100mL



#### Plate Readers

Code	Description
MIC9256	Sunrise absorbance plate reader with 4 filter slide 405nm 450nm 492nm and 620nm filters with temperature control (42C) and magellan software
MIC9258	Sunrise absorbance plate reader with 6 filter slide 405nm 450nm 492nm 540nm 570nm and 620nm filters with temperature control (42C) and magellan software



An ideal solution for a range of applications, the Sunrise absorbance reader can measure an entire 96-well plate in less than six seconds.

# Spotlight on: SAMPLE PREP

SLS can supply a wide range of sample preparation products to ensure the most efficient extractions from precious samples.

Key product highlights:

- Precellys Evolution Homogeniser**  
 Over 10 years of sample preparation expertise has resulted in the Evolution homogeniser becoming the ultimate universal tissue homogeniser used in laboratories
- Cytiva Protein Prep Syringe Filters**  
 Optimized for sample prep prior to chromatography with ÄKTA protein purification systems
- Meridian Bioscience Isolate Kits**  
 ISOLATE II Genomic DNA Kit is designed for the rapid and efficient isolation of highly pure genomic DNA from a variety of starting materials such as animal tissue, paraffin embedded tissue, rodent tail, buccal swabs, bacteria, yeast and other eukaryotic cells

## Sample Preparation Workflow

### Sample Lysis – Mechanical

#### Homogenizers

Code	Description
HOM1000	Precellys Evolution homogeniser with adapter for 2mL/0.5mL tubes
HOM1004	Precellys Evolution homogeniser with Cryolys Evolution cooling unit (requires dry lie)



#### Accessories

Code	Description
HOM1016	7mL holder pack for Precellys Evolution
HOM1018	15mL holder pack for Precellys Evolution
HOM1020	96WP tube holder V2 for Precellys Evolution
HOM1022	96WP blocking Ppate V2f or Precellys Evolution



#### Kits

Code	Description
HOM1044	Precellys 2mL lysing kits, soft tissue homogenizing CK14
HOM1056	Precellys 2mL lysing kits, tissue homogenizing CKMix
HOM1064	Precellys 2mL reinforced lysing kits, hard tissue homogenizing CK28-R
HOM1078	Precellys 7mL lysing kits, tissue homogenizing CK28-7mL
HOM1092	Precellys 15mL lysing kits, hard tissue homogenizing CK28-15mL
HOM1104	Precellys prefilled 96 well-plate, soft tissue homogenizing CK14-WP

### Sample Lysis – Chemical

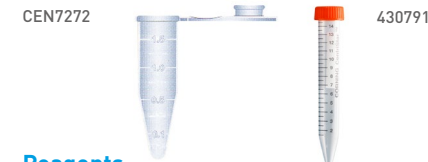
#### Equipment

Code	Description
CEN5050	SLS Lab Basics 12 mini centrifuge
E5406000569	Eppendorf centrifuge 5425R knob control with rotor refrigerated



#### Plastics

Code	Description
CEN7272	Microfuge tube, 1.7mL, clear
430791	Corning centrifuge tubes, 15mL, polypropylene Conical bottom with Centristar cap, sterile



#### Reagents

Code	Description
21-040-CM	1L PBS (Phosphate-Buffered Saline) 1x without calcium & magnesium
R0278-50ML	RIPA buffer
P8340-1ML	Protease inhibitor cocktail for use with mammalian cell & tissue extracts, DMSO solution
P2714-1BTL	Protease inhibitor cocktail for general use, lyophilized powder
GE80-6501-23	Cytiva protease inhibitor mix, for 2D studies



### Protein Purification

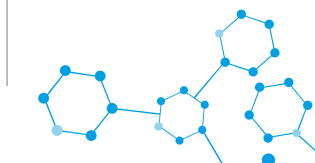
#### Filtration

Code	Description
10463103	Cytiva protein prep syringe filter for AKTA systems, 13mm diameter 0.2µm regenerated cellulose membrane
10463113	Cytiva protein prep syringe filter for AKTA systems, 13mm diameter 0.45µm regenerated cellulose membrane
10463043	Cytiva protein prep syringe filter for AKTA Systems, 30mm diameter 0.2µm regenerated cellulose membrane
10463033	Cytiva protein prep syringe filter for AKTA systems, 30mm diameter 0.45µm regenerated cellulose membrane
FIL2522	Whatman SPARTAN 13mm HPLC-certified syringe filter, regenerated cellulose, 0.2µm, with mini-tip outlet
FIL2526	Whatman SPARTAN 13mm HPLC-certified syringe filter, regenerated cellulose, 0.45µm, with mini-tip outlet



#### Purification

Code	Description
17040501	HiTrap Protein G HP, 1 x 5mL
17115401	HiTrap Q HP, 5 x 5mL
17115201	HiTrap SP HP, 5 x 5mL
17115301	HiTrap Q HP, 5 x 1mL
17072901	SP Sepharose Fast Flow, 300mL
17070901	CM Sepharose Fast Flow, 500mL



### DNA Purification

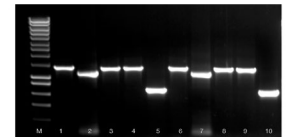
#### Equipment

Code	Description
SLS1176	SLS Lab Pro unstirred water bath, 4L with clear polycarbonate lid
SLS1172	SLS Lab Pro stirred water bath, 14L



#### DNA Isolation Kits

Code	Description
BI052066	Meridian Bioscience ISOLATE II genomic DNA kit, 50 preps
BI052059	Meridian Bioscience ISOLATE II PCR & gel kit, 50 preps
BI052069	Meridian Bioscience ISOLATE II plant DNA kit, 50 preps



#### Reagents

Code	Description
BI037084	Meridian Bioscience proteinase K solution, 5mL 20mg/mL
BI037085	Meridian Bioscience proteinase K solution, 5 x 5mL 20mg/mL



England & Wales: 0115 982 1111  
 Scotland: 01236 431 857  
 slsinfo@scientific-labs.com  
 scientificlabs.co.uk

# Spotlight on: ELECTROPHORESIS

SLS have an extensive range of electrophoresis products from trusted suppliers such as Lonza and Syngene.

Key product highlights:

- Lonza Agarose**  
 SeaKem® LE Agarose is ideal for routine analysis of nucleic acids by gel electrophoresis and blotting
- Syngene Gel Imagers**  
 NuGenius is a new generation, low cost, integrated imaging system for DNA and protein analysis and gel documentation

## Electrophoresis Workflow

### Select/Prepare Gels

#### Precast Gels

Lonza Reliant Pre-Cast Minigel. Supplied in packs of 20.

Code	Description
LZ54801	1% SK Gold+ agarose TAE EB (6 x 9.5cm, 8 well)
LZ54820	1% SK Gold+ agarose TBE EB (6 x 9.5cm, 12 well)
LZ54825	2% SK Gold+ agarose TBE EB (6 x 9.5cm, 12 well)
LZ54813	2% SK Gold+ agarose TBE EB (6 x 9.5cm, 24 well)
LZ54925	4% NS 3:1+ agarose TAE EB (6 x 9.5cm, 8 well)
LZ54928	4% NS 3:1+ agarose TBE EB (6 x 9.5cm, 20 well)



LZ54801

#### Agarose

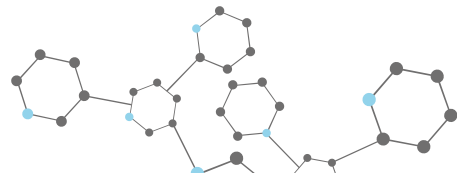
Code	Description
LZ50000	Lonza SeaKem LE agarose, 125g
LZ50100	Lonza SeaPlaque agarose, 125g
LZ50020	Lonza SeaKem HE agarose, 125g
LZ50010	Lonza SeaKem ME agarose, 125g



LZ50010

#### Acrylamide

Code	Description
LZ50618	Lonza ProSieve 50 acrylamide gel solution, 250mL
LZ50617	Lonza ProSieve 50 acrylamide gel solution, 125mL



### Extract/Prepare Sample

#### DNA Extraction

Meridian Bioscience ISOLATE II Kits.

Code	Description
BIO52066	Genomic DNA Kit, 50 preps
BIO52067	Genomic DNA Kit, 250 preps
BIO52072	RNA Mini Kit, 50 preps
BIO52073	RNA Mini Kit, 250 preps

#### PCR

Code	Description
MOL2704	Blue-Ray Biotech Gradient TurboCycler Lite with 96-well sample block

E6333000049 Eppendorf Mastercycler Nexus PCR thermal cycler



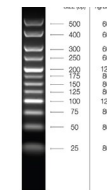
MOL2704



E6333000049

#### Ladders

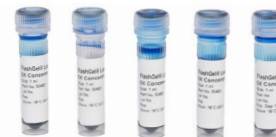
Code	Description
BIO33031	Meridian Bioscience Hyper-Ladder 25bp, 200 Lanes
BIO33029	Meridian Bioscience Hyper-Ladder 100bp, 200 Lanes
BIO33025	Meridian Bioscience Hyper-Ladder 1kb, 200 Lanes



BIO33031

#### Loading Buffer

Code	Description
LZ50655	Lonza DNA loading buffer 6X concentration, 5 x 1mL
NAT1192	Triple dye loading buffer 6X concentration for DNA/RNA electrophoresis, 1.2mL



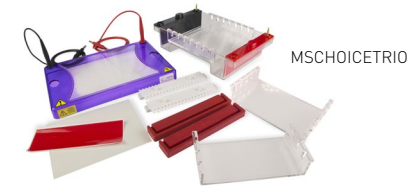
LZ50655

### Run Gel

#### Gel Tanks

SLS Flowgen MultiSUB Choice

Code	Description
MSCHOICE7	15x7cm UV tray combs and dams
MSCHOICE10	15x10cm UV tray combs and dams
MSCHOICE15	15x15cm UV tray combs and dams
MSCHOICETRIO	15x7, 15x10 & 15x15cm UV tray combs and dams



MSCHOICETRIO

#### Power Supplies

Code	Description
NANOPAC-300	SLS Flowgen NanoPAC 300 MINI electrophoresis power supply, 400mA, 300V, 60W
ELE2600	SLS Flowgen PowerPro 300 electrophoresis power supply, 700mA, 300V, 150W
ELE2602	SLS Flowgen PowerPro 500 electrophoresis power supply, 800mA, 500V, 300W



NANOPAC-300



ELE2600

#### Buffers

Code	Description
NAT1196	TBE buffer 10X concentration for DNA/RNA electrophoresis, 1L
NAT1222	TAE buffer 50X concentration for agarose DNA electrophoresis, 1L



NAT1222



NAT1196

### DNA - Image & Analyse Results

#### Stains

Code	Description
LZ50512	Lonza SYBR green I nucleic acid stain 10000X Concentrate in DMSO, 2 x 50µL
LZ50522	Lonza ScBR green II nucleic acid stain 10000X concentrate in DMSO, 2 x 50µL



#### Transilluminators

Code	Description
ULT4500	UV transilluminator 21 x 21cm, 254nm
ULT4502	UV transilluminator 21 x 21cm, 312nm
ULT4504	UV transilluminator 21 x 21cm, 365nm



ULT4500

#### Gel Imagers

Code	Description
ELE0028	Syngene NuGenius Gel Documentation System with Epi LED white lights filter drawer and UV filter
ELE7601	Syngene G:BOX CHEMI XRQ multi fluorescence and chemiluminescence imaging system



ELE0028



ELE7601



England & Wales: 0115 982 1111  
 Scotland: 01236 431 857  
 slsinfo@scientific-labs.com  
 scientificlabs.co.uk



# Spotlight on: qPCR

SLS can offer reagents and equipment for the whole qPCR workflow from exclusive suppliers such as Meridian Bioscience.

Key product highlights:

- Meridian Bioscience SensiFAST® Kits**  
 Outstanding assay reproducibility, sensitivity and robustness from both DNA and RNA templates, under fast thermal cycling conditions
- Blue-Ray Biotech TurboQ**  
 TurboQ real-time PCR system is designed for multiplex and routine PCR applications with up to 4 targets

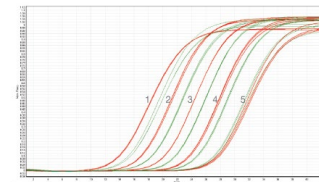
## qPCR Workflow

### RNA Extraction

#### Extraction Kits

Code	Description
BI052071	Meridian Bioscience ISOLATE II RNA mini kit, 10 Preps
BI052072	Meridian Bioscience ISOLATE II RNA mini kit, 50 Preps
BI052074	Meridian Bioscience ISOLATE II RNA micro kit, 10 Preps
BI052075	Meridian Bioscience ISOLATE II RNA micro kit, 50 Preps

ISOLATE II RNA Mini Kits provide a fast, simple and efficient method for the purification of high-quality total RNA



#### Filter Tips

Biotics racked pipette filter tips, sterile

Code	Volume, µL	Pack
SLE5146	10	10 x 96
SLE5148	10XL	10 x 96
SLE5150	20	10 x 96
SLE5152	100	10 x 96
SLE5154	200	10 x 96
SLE5158	1000	8 x 96
SLE5160	1200	8 x 96

Contact us for stock availability.

Biotics pipette tips provide accurate and consistent sample delivery



### Sample Preparation

#### Plate Spinner

Code	Description
SLS1002	SLS Flowgen plate spinner centrifuge



#### Cabinet

Code	Description
CAB1024	Clearline UV/PCR cabinet; economy; glass front; dual UV protection lamp and UV recirculator; integral power socket



#### Reagents

Code	Description
BI078001	Meridian Bioscience SensiFAST® probe Lo-ROX one-step kit, 100 reactions
BI076001	Meridian Bioscience SensiFAST® probe No-ROX one-step kit, 100 reactions
BI077001	Meridian Bioscience SensiFAST® probe Hi-ROX one-step kit, 100 reactions
46-000-C1	Sterile molecular biology grade water, 100mL
LZBE51200	Lonza AccuGENE molecular biology water, 1L



Meridian Bioscience SensiFAST® Kits for rapid, accurate & sensitive quantification

#### Plastics

Code	Description
PCR1192	4titude Framestar™ 96 well semi-skirted universal style PCR plate with upstand rigid 2-component white wells, clear frame
PCR1262	4titude Break-A-Way qPCR plate semi-skirted 0.2mL well working volume, 2-component white wells, black frame, divisible into part plates and 8-strip tubes
PCR0948	4titude Framestar™ 96 well standard qPCR plate non-skirted rigid 2-component black frame, white wells
PCR0432	4titude Framestar™ 384 well qPCR plate ultra-rigid high performance 2-component clear frame, white wells
PCR0564	4titude qPCR adhesive plate seals optically clear for imaging including qPCR peelable sheets



4titude Framestar PCR plates prevent sample loss using a 2-component design for optimum PCR results

### Run the qPCR

#### qPCR System

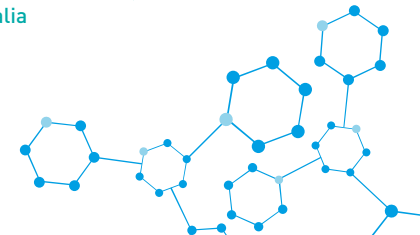
Code	Description
MOL2700	Blue-Ray Biotech TurboQ Real-Time PCR System fixed 96-well, 4-channel optics enable multiplex detection up to 4 targets per well. CCD base detection system for fast and uniform detection. Laptop included.



### Meridian Bioscience SensiFAST® Probe One-Step Kit Review

*"I compared the SensiFAST Probe One-Step Kit with another very popular product. SensiFAST Probe One-Step gave improved sensitivity, which was reflected in lower Ct values. Also, this product is a very good price. Value for money!"*

– Peony Fung, Cerberus Sciences, Thebarton, Australia



# Spotlight on: ELISA

SLS can supply products for the set up and analysis of ELISA assays from market leading suppliers such as Thermo Scientific and Tecan.

Key products highlights:

- Tecan Sunrise Plate Reader**  
 The Sunrise absorbance reader is an ideal solution for a range of applications, such as ELISAs, enzyme kinetics, cell viability studies, veterinary assays and many more
- Nunc Maxisorp Plates**  
 Optimized to bind high amounts of IgG (polyclonal), these plates are ideal for antibody sandwich assays (e.g., ELISAs)

## ELISA Workflow

### Coating

Microplate is coated with antigen or capture antibody of interest.

#### Multi Channel Pipettes

Code	Description
SLS4966	SLS Lab Pro 8 channel, 20-300µL
SLS4974	SLS Lab Pro 12 channel, 20-300µL
PIP0352	Corning Lambda EliteTouch 8 channel, 30-300µL
PIP0380	Corning Lambda EliteTouch 12 channel, 30-300µL



#### Microplates

Thermo Scientific Nunc, 96 well

Code	Description	Pack
442404	Immuno, clear, flat, MaxiSorp, non sterile	60
437111	Immuno, black, flat, MaxiSorp, non sterile	80
436110	Immuno, white, flat, MaxiSorp, non sterile	80



Corning, 96 well

Code	Description	Pack
9017	EIA/RIA, clear, flat bottom, non treated, non sterile	100
9018	Clear, flat bottom, high bind, non sterile	100
3912	White, flat bottom, non treated, non sterile	100
3922	White, flat bottom, high bind, non sterile	100
3915	Black, flat bottom, non treated, non sterile	100
3925	Black, flat bottom, high bind, non sterile	100



Other microplate formats available

### Washing

Remove buffer and wash microplate between each step.

#### Washers

Tecan HydroFlex

Code	Description
MIC9290	8 channel wash head/2x reagent inlets
MIC9292	8 channel wash head/4x reagent inlets
MIC9296	16 channel wash head/2x reagent inlets
MIC9298	16 channel wash head/4x reagent inlets

Tecan HydroSpeed

MIC9344	96 channel HT wash head/2x reagent inlets
MIC9346	96 channel HT wash head/3x reagent inlets
MIC9348	96 channel HT wash head/4x reagent inlets
MIC9360	384 channel wash head/2x reagent inlets
MIC9362	384 channel wash head/3x reagent inlets
MIC9364	384cChannel wash head/4x reagent inlets



The Tecan HydroFlex provides an automated platform for microplate strip washing, magnetic bead washing and vacuum filtration in 96 well formats, reflecting Tecan 30 years of expertise in Liquid Handling products.

### Blocking & Sample Detection

Blocking agents added to prevent non specific binding of antigens and antibodies to the microplate wall. Sample containing antibody directly conjugated to an enzyme added to plate. If the detection antibody is unlabeled, a secondary enzyme-conjugated detection antibody is required.

#### Reagent Reservoirs

Code	Description	Pack
4870	Corning Costar 50mL PS, Sterile, 5/Bag	200
4872	Corning Costar 100mL PS, Sterile, 5/Bag	200
SLS9514	SLS Select 25mL PS, Non Sterile, Bulk	100
SLS9520	SLS Select 50mL PS, Non Sterile, Bulk	100



#### Sealing Film/Tape

Code	Description	Pack
PCRSP	Corning Axygen 80µm polyester sealing film, non sterile, 100/pack	500
6570	Corning 96 well aluminum sealing tape, non sterile	100
6569	Corning 384 well aluminum sealing tape, non sterile	100



### Analysis

Enzyme reaction resulting in measurable absorbance, fluorescence or luminescence signals.

#### Plate Readers

Tecan

Code	Description
MIC9310	Infinite F50 absorbance plate reader, 405, 450, 492 & 620nm
MIC9250	Sunrise absorbance plate reader with 4 filter slide, 405, 450, 492 & 620nm
MIC9252	Sunrise absorbance plate reader with 6 filter slide, 405, 450, 492, 540, 570 & 620nm
MIC9254	Sunrise absorbance plate reader with gradient filter slide, 400-700nm
MIC9264	Infinite M nano absorbance monochromator plate reader & temperature, 230-1000nm



Biochrom

Code	Description
MIC6140	EZ Read 800 ELISA plate reader with 4 filters: 405, 450, 492 & 620nm
MIC6144	EZ Read 800 Plus ELISA plate reader with 4 filters: 405, 450, 492 & 620nm
MIC8400	EZ Read 400 ELISA plate reader with 4 filters: 405, 492, 450 & 620nm



# Spotlight on: CHROMATOGRAPHY

SLS are partnered with some of the most respected brand names to bring you top quality products for Chromatography.

Key brand names include:

- Honeywell
- Sigma-Aldrich
- SLS Select
- Reagecon
- SPEX CertPrep Ltd
- Kinesis
- Merck

## Chromatography Workflow

### Sample Collection

Assortment of vials, plates & closures compatible for all HPLC/GC systems available in a range of sizes for most applications.

#### Popular products include:

Code	Description
CHR2396	Smart pack - screw vial 2mL clear label + rubber / PTFE cap
CHR2406	Smart pack - screw vial 2mL amber label + rubber / PTFE cap
CHR2362	Smart pack - snap vial 2mL clear label + rubber / PTFE cap
CHR2370	Smart pack - snap vial 2mL amber label + rubber / PTFE cap
CHR2320	Smart pack - crimp vial 2mL clear label + rubber / PTFE cap
CHR2330	Smart pack - crimp vial 2mL amber label + rubber / PTFE cap



### Sample Preparation

Wide variety of products for preparation and purification techniques.

#### Products available for:

- Filtration including syringe filters
- Solid phase extraction (SPE)
- Solid phase microextraction (SPME)
- Protein precipitation
- Flash chromatography and LPLC
- QuEChERS and dispersive SPE
- Air monitoring
- Sample decomposition
- Purge and trap
- Phospholipid removal
- Dioxin and PCB sample analysis



### Solvents

High purity solvents for analytical applications like GC, (U)HPLC & LC-MS. Including Chromasolv™ and LiChrosolv®

#### Popular products include:

Code	Description
34863-2.5L	2-Propanol, Chromasolv™, for HPLC, 99.9%
34850-2.5L	Acetone, Chromasolv™, for HPLC, >=99.8%
34998-2.5L	Acetonitrile Chromasolv™ Plus for HPLC
34888-2.5L	Acetonitrile E Chromasolv™ for HPLC
34967-2.5L	Acetonitrile lc-ms Chromasolv™
34851-2.5L	Acetonitrile, Chromasolv™ gradient grade, for HPLC, >=99.9%
34856-2.5L	Dichloromethane Chromasolv™ for hplc >=99.8% contains amylene as stabilizer
34859-2.5L	Hexane, Chromasolv™, for HPLC, >=97.0% [GC]
34860-2.5L	Methanol Chromasolv™ for HPLC greater than or equal to 99.9%
34966-2.5L	Methanol lc-ms Chromasolv™ >=99.9%
34873-2.5L	N-heptane Chromasolv™ for HPLC
34875-2.5L	Tert.-butyl methyl ether Chromasolv™ for HPLC
34865-2.5L	Tetrahydrofuran Chromasolv™ for HPLC
34866-2.5L	Toluene Chromasolv™ for HPLC
34877-2.5L	Water, Chromasolv™ Plus, for HPLC

### Chromatography

Range of (U)HPLC/GC columns & Thin Layer Chromatography (TLC) products from Merck, Tosoh & Kinesis. Available for a wide variety of analytical applications.

#### Key brands include:

- apHera
- Ascentis
- Ascentis Express
- Astec
- Discovery
- Discovery BIO
- SUPELCOGEL
- SUPELCOSIL
- Titan C18
- ZIC®
- HILIC
- ZIC®
- pHILIC
- LiChrosorb®
- LiChrospher®
- Superspher®
- Purospher®
- Sequant®
- Chromolith®
- BioShell
- TSKgel
- TOYOPEARL

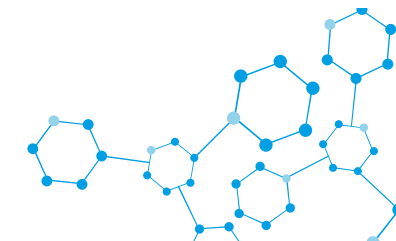


### Certified Reference Materials & Standards

Comprehensive range of products for all applications. Traceable to NIST and Certified to ISO 9001:2015, ISO/IEC 17025:2017 and ISO 17034:2016.

#### Key brands include:

- Fluka™
- TraceCERT®
- Certipur®
- Cerilliant®
- Aquastar®
- HYDRANAL™
- Vetranal™
- Pestanal®



**Honeywell** **Sigma-Aldrich**  
Lab & Production Materials



**Reagecon** **SPEX CertiPrep Ltd.**  
Delivering the Correct Result

**Kinesis**  
Scientific Experts

**SCIENTIFIC**  
**LABORATORY**  
**SUPPLIES**

England & Wales: 0115 982 1111  
Scotland: 01236 431 857  
@ slsinfo@scientific-labs.com  
www scientificlabs.co.uk



# Spotlight on: SUSTAINABILITY

At SLS, from our supply chain to our in-house practices we aim to be the most sustainable and environmentally friendly distributor to the laboratory market. We have a continuous commitment to offering sustainable products that offer the highest levels of build quality and performance, the longest lifespan and the lowest running costs. Through our dedicated sustainability team, we continuously review our range whilst ensuring our own practices meet the highest environmental standards.

It is our promise to support our customers in their efforts to eliminate needless expenditure and minimise the environmental impact of their research and processes.

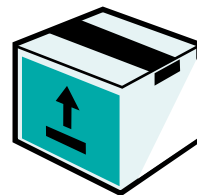
Working closely together, we remain committed to helping our customers achieve their own sustainability targets, delivering a better world for us and future generations.

## Sustainability



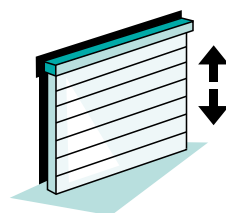
Implementation of a new paperless Warehouse Management System saving approx.

**160,000** SHEETS of paper a year



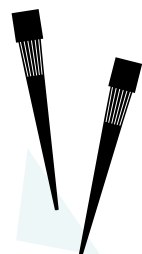
All cardboard boxes bought for packaging are from

**FSC** CERTIFIED SOURCES



**£7K** INVESTMENT

in a **high speed environmental automatic door** at goods in, to prevent heat loss leading to less gas usage



**1.663 TONS** of empty tip boxes

removed from customers' sites under our waste to energy scheme. We are currently trialling a **Plastic2Purpose** scheme. Visit [scientificlabs.co.uk/sustainability](http://scientificlabs.co.uk/sustainability) to find our more.

**£150K** INVESTMENT

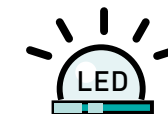
in a new **insulated roof** to the Nottingham site, reducing heat loss, leading to less gas usage



Between 2020-21, we will have planted 1000 trees which will offset 33.33 tons of CO<sub>2</sub> (per year) – minimising our impact on the environment and our carbon footprint



We have joined Nottingham's **Tram2Work scheme** to encourage more employees to use public transport



OVER **75%**

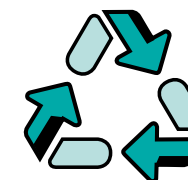
of our Nottingham facility uses low energy motion sensor **LED lighting**



EVERYONE at the Nottingham site has been given **reusable cups** to eliminate the use of approx

**60K** PLASTIC CUPS

from the vending machine per year

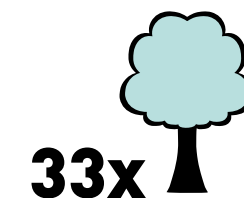


We reuse any **VOID** FILLER MATERIAL sent by our suppliers

**WEEE** WASTE

**100** fluorescent tubes recycled  
**245kg** non-obligated WEEE waste recycled  
**101kg** hazardous non-obligated WEEE waste recycled

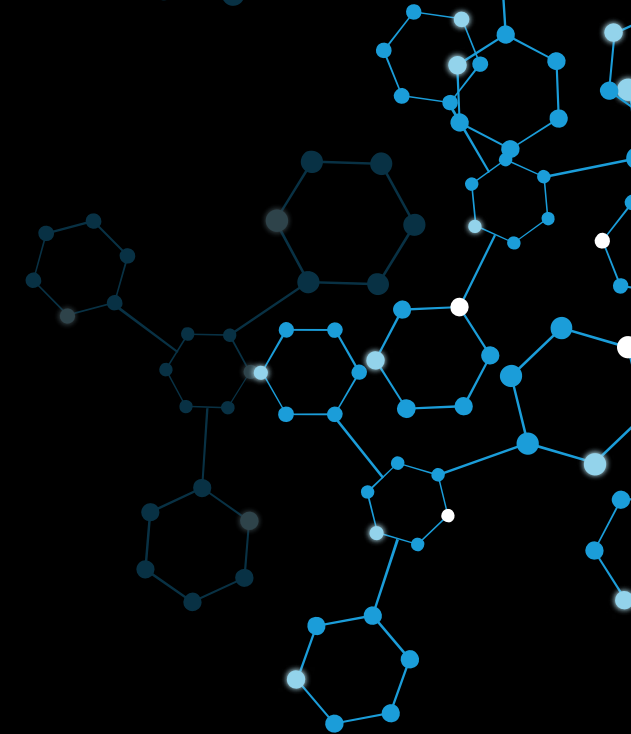
**PLUS** **1.020 tons** of waste glass recycled to new glass  
**21.6 tons** of cardboard recycled, (1.8 tons p/m)  
**2.904 tons** mixed plastics recycled, (0.242 tons p/m)  
**4.5 tons** of office paper recycled (379 tons p/m)



**33x**

**32.95 TONS** of waste converted to energy

100% waste diverted from landfill equating to a CO<sub>2</sub> reduction equal to four cars off the road for a year or 33 trees planted over their lifetime



Scientific Laboratory Supplies  
Wilford Industrial Estate  
Ruddington Lane  
Nottingham, NG11 7EP

@ slsinfo@scientific-labs.com

www scientificlabs.co.uk